



Woodlands Road, TW7

£375,000

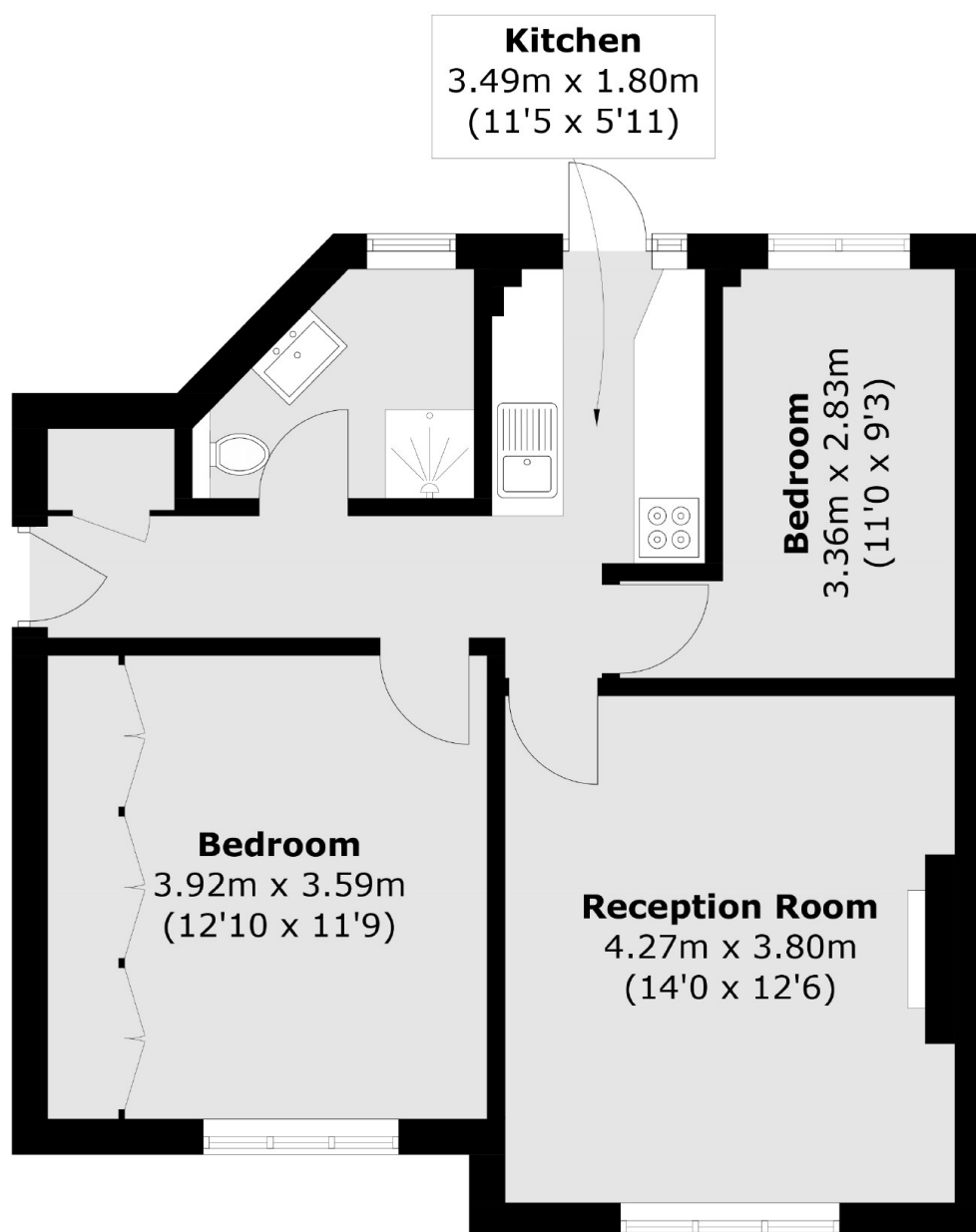
Offered to the market with no onward chain is this immaculately presented and spacious two bedroom ground floor apartment on a popular road in Isleworth. Further benefits include a long lease, separate lounge and direct access to the communal gardens. Garage available under separate negotiations

Woodlands Road is a quiet and sought after road in Isleworth. The area has strong transport links with Isleworth station offering direct trains into central London, and M4 access to central London and Heathrow. The area is popular with both young families and professionals owing to it's transport links and wealth of local amenities.

Features

- Ground Floor Apartment
- Two Bedrooms
- Long Lease
- Communal Gardens
- No Chain
- Garage (under separate negotiation)

Woodlands Road, Isleworth, TW7



Total area (approx.): 55.4 sq. m (596.3 sq. ft)

Dexters

Isleworth
568 London Road
Isleworth
TW7 4EP
Sales
020 8560 1177

Energy Rating: D. We aim to make our particulars both accurate and reliable. However they are not guaranteed; nor do they form part of an offer or contract. If you require clarification on any points then please contact us, especially if you're traveling some distance to view. Please note that appliances and heating systems have not been tested and therefore no warranties can be given as to their good working order.

 **RICS** | Regulated
Estate Agent
and Letting Agent

dexters.co.uk