



## Marbaix Gardens, TW7

### £599,950

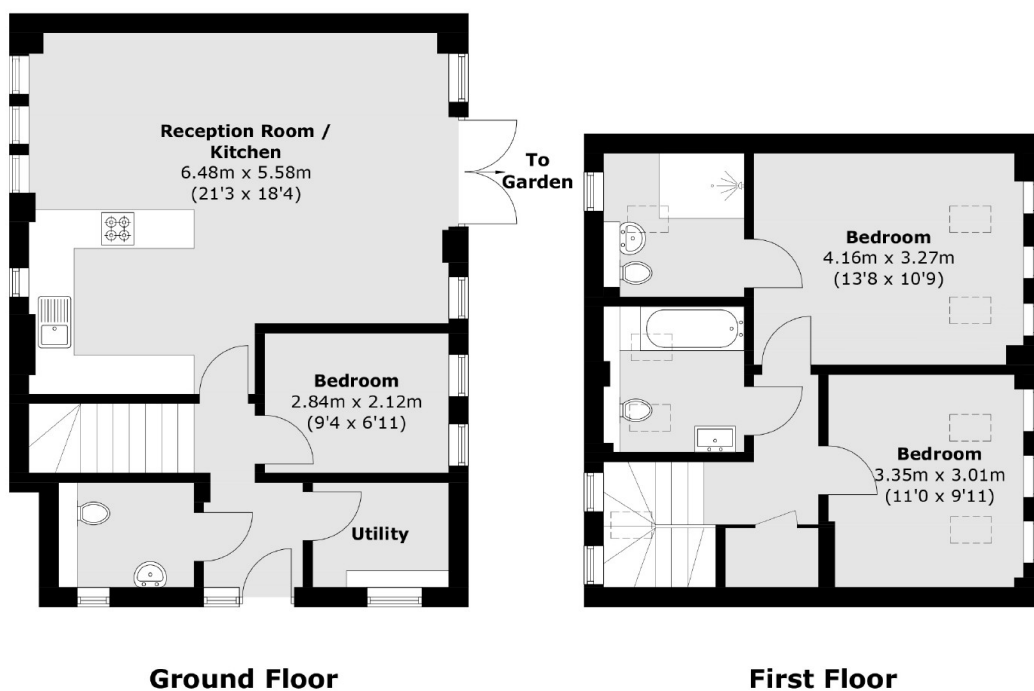
Offered to the market with no onward chain is this family home within the exclusive Marbaix Gardens gated development! The property is arranged over two floors and offers three bedrooms, two bathrooms, a private garden, allocated parking and two storage sheds.

Tigar Lodge is located within the popular Marbaix Gardens gated development located just off Thornbury Road, with amazing links to and from London via car and public transport. Osterley tube station and Isleworth train stations are just a short walking distance away.

### Features

- Three Bedrooms
- Two Bathrooms
- Utility Room
- Private Garden
- No Onward Chain
- Allocated Parking

# Marbaix Gardens, Isleworth, TW7



Total area (approx.): 98.6 sq. m (1061.3 sq. ft)