



Oakley Close, TW7

£349,950

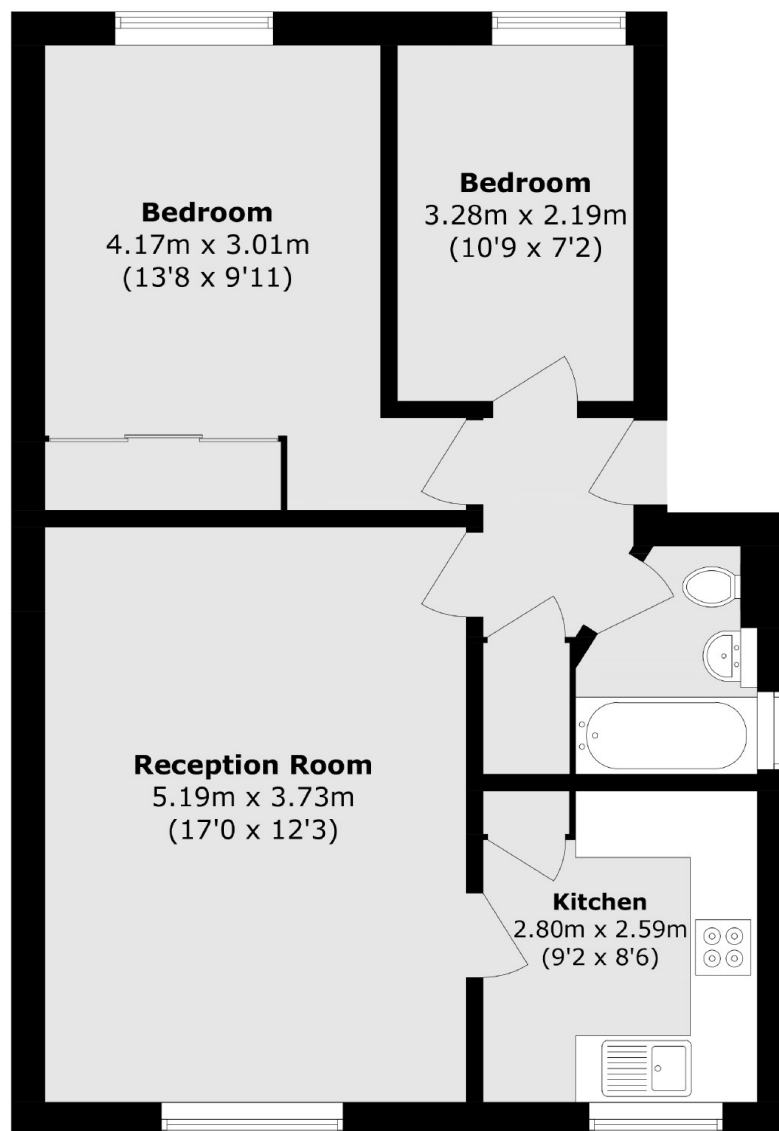
Offered to the market with no onward chain is this superb two double bedroom apartment located on the first floor of a popular, quiet and well maintained private estate. Benefits include communal gardens, long lease/share of freehold, low service charge and ample permit parking.

Oakley Close is located in a quiet residential area and sought after location in Isleworth just off Thornbury Road. There are a vast array of local shops, restaurants, parks, schools and colleges close by as well as easy access to the A4 into central London. Osterley Tube Station is a short walk away providing quick access to Heathrow Airport and Central London.

Features

- First Floor Apartment
- Two Double Bedrooms
- Share of Freehold
- Low Service Charge
- Communal Gardens
- No Chain

Oakley Close, Isleworth, TW7



Total area (approx.): 55.7 sq. m (599.6 sq. ft)