



## Smithy Lane, TW3

### £465,000

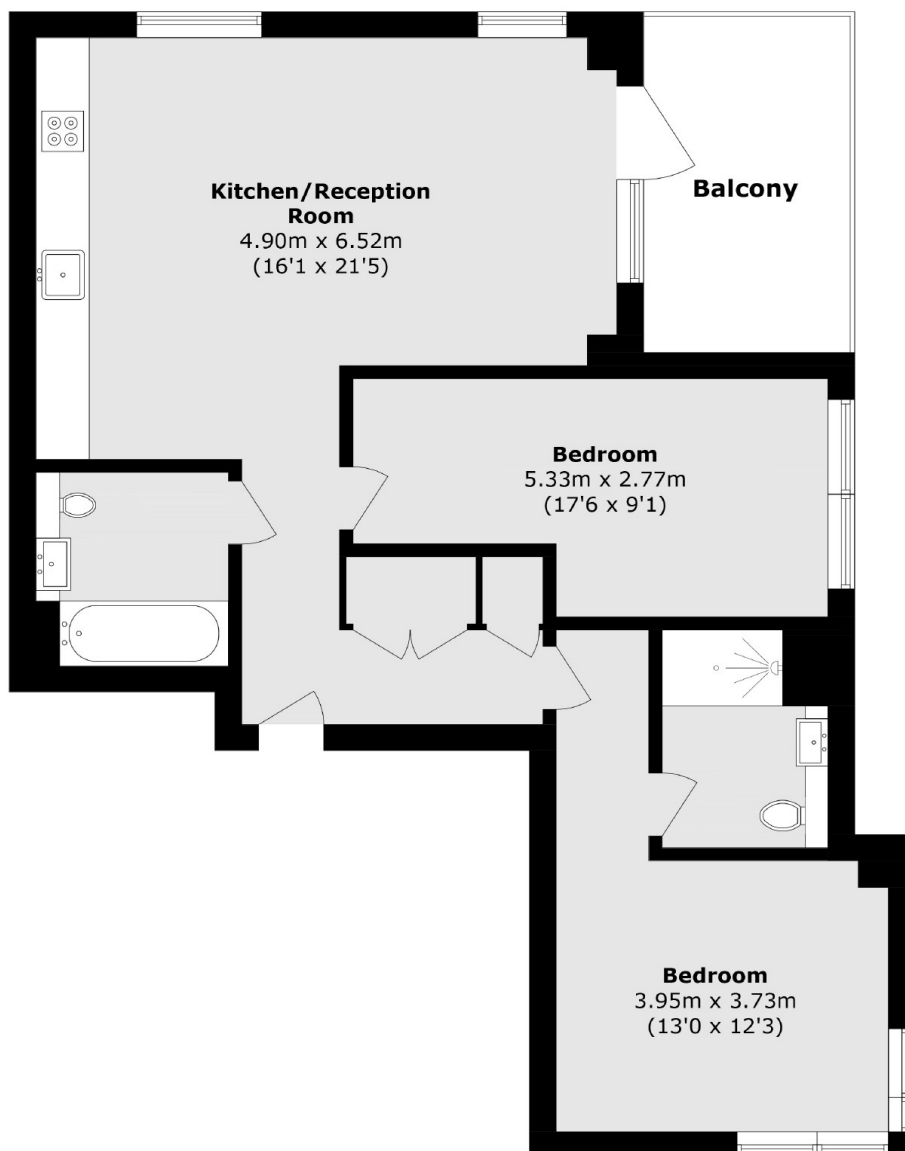
Located on the 8th floor of this iconic and stunning West-London building, we are delighted to launch this exceptional two bedroom, two bathroom apartment. Offering more than 820 square feet of living space, this one of a kind apartment offers stunning views of Central London's skyline, in addition to a generous balcony. Further benefits include NHBC New Build Warranty and a long lease

Hooper House is nestled in a sought after and central location in Hounslow Town Centre, surrounded by an array of shops, bars, restaurants and cinema complex. Excellent transport links are located nearby

### Features

- Eighth Floor Apartment
- Two Double Bedrooms
- Two Bathrooms
- Balcony & Communal Gardens
- Immaculate Condition
- Stunning Central London Views

# Smithy Lane, Hounslow, TW3



Total area (approx.): 76.5 sq. m (823.4 sq. ft)

Balcony area (approx.): 6.6 sq. m (71 sq. ft)

## Dexters

Isleworth  
568 London Road  
Isleworth  
TW7 4EP  
Sales  
020 8560 1177

Energy Rating: . We aim to make our particulars both accurate and reliable. However they are not guaranteed; nor do they form part of an offer or contract. If you require clarification on any points then please contact us, especially if you're traveling some distance to view. Please note that appliances and heating systems have not been tested and therefore no warranties can be given as to their good working order.

 **RICS** | Regulated  
Estate Agent  
and Letting Agent

dexters.co.uk