



**Hanworth Road, TW3**

**£649,950**

**Dexters**



## Hanworth Road, TW3

Offered to the market with no onward chain is a fantastic opportunity to purchase this immaculately presented four bedroom, two bathroom semi detached house located on a popular and sought after road. Further benefits include a large private garden and driveway for multiple cars. There is further scope to extend into the loft (STPP)

Situated in a conservation area in a sought after location, Hanworth Road is close to excellent local schools, park and transport links. Neighbouring areas of Whitton, Twickenham and Isleworth are all within easy reach.

### Features

- Semi Detached House
- Four Bedrooms
- Two Bathrooms
- Driveway for Multiple Cars
- Excellent Conditions
- No Chain





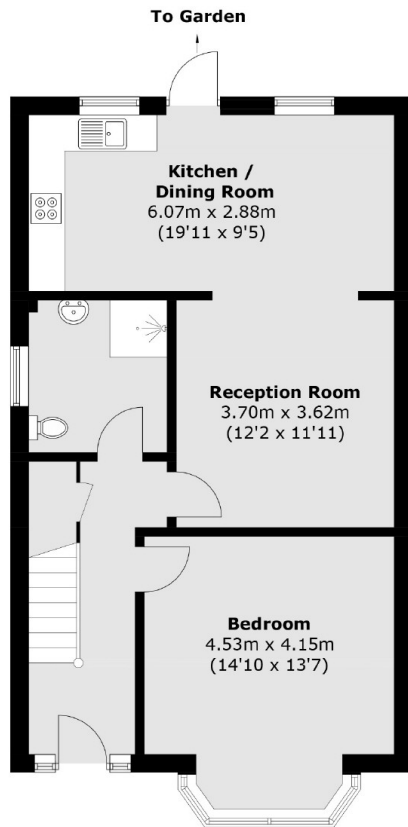




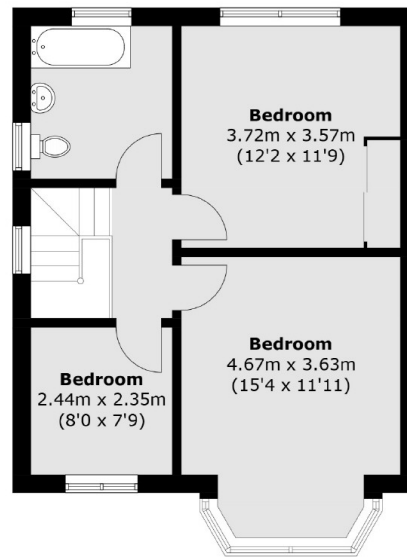




# Hanworth Road, Hounslow, TW3



**Ground Floor**



**First Floor**

Total Area: 115.0 sq. m (1,237.8 sq. ft)

## Dexters

Isleworth  
568 London Road  
Isleworth  
TW7 4EP  
Sales  
020 8560 1177

Energy Rating: . We aim to make our particulars both accurate and reliable. However they are not guaranteed; nor do they form part of an offer or contract. If you require clarification on any points then please contact us, especially if you're traveling some distance to view. Please note that appliances and heating systems have not been tested and therefore no warranties can be given as to their good working order.

 **RICS** | Regulated  
Estate Agent  
and Letting Agent

[dexters.co.uk](https://www.dexters.co.uk)