



Beresford Gardens, TW4

£650,000

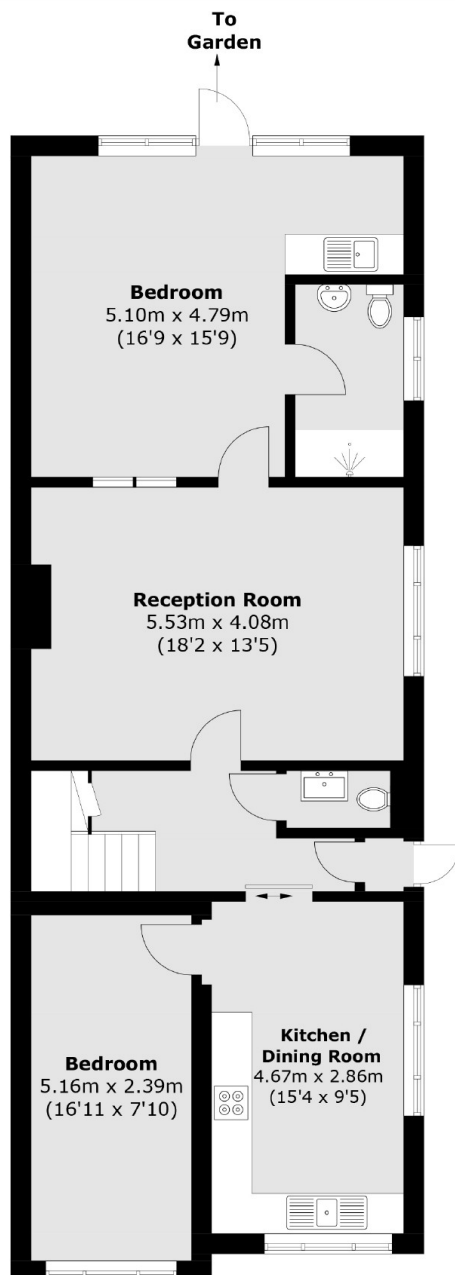
Offered to the market with no onward chain, we are delighted to offer this spacious four bedroom family home located in a quiet residential cul-de-sac. The property benefits from two large reception rooms, private rear garden, two bathrooms plus an additional downstairs WC and off street parking for multiple cars.

The property is conveniently situated on a quiet residential road moments from Heathland School. Hounslow high street, local parks and transport links are also located nearby, as well as easy access to neighbouring areas of Twickenham, Whitton and Isleworth.

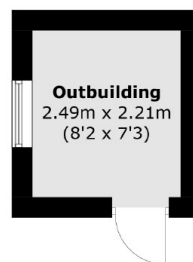
Features

- Semi Deatched
- Five Double Bedrooms
- Two Bathrooms
- Off Street Parking
- Close to Amenities
- No Onward Chain

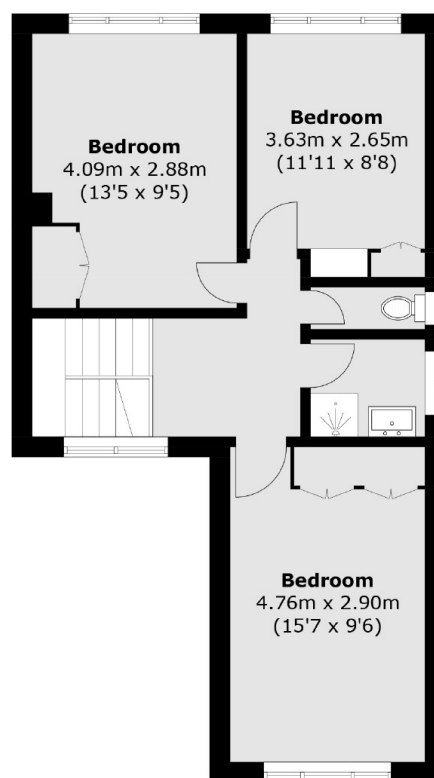
Beresford Gardens, Hounslow, TW4



Ground Floor



(Not Shown In Actual
Location / Orientation)



First Floor

Total area (approx.): 139.6 sq. m (1,502.6 sq. ft)
Outbuilding : 5.6 sq. m (60.2 sq. ft)