



## Golden Court, TW7

### £164,950

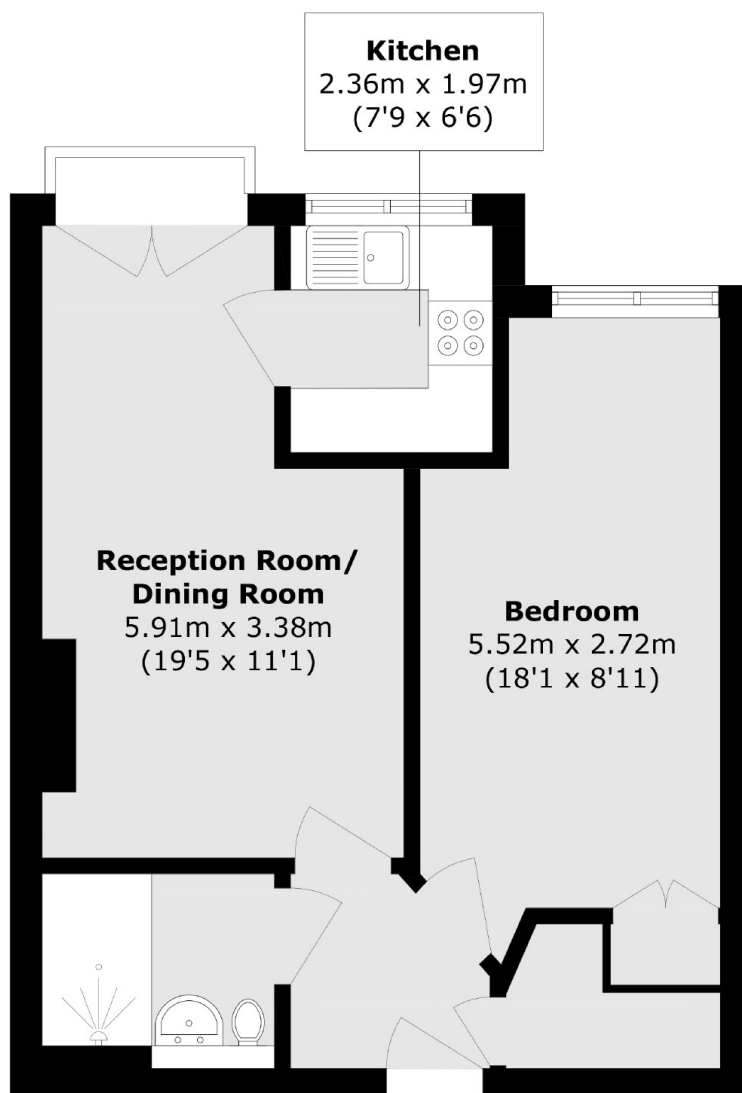
Offered to the market with no onward chain is this bright and spacious one double bedroom retirement home, for over 60s. We love the larger than average reception room and ample storage space. Further benefits include gated parking, lift service, private communal gardens, an on-site manager, library, gym, residents lounge, laundry room and care line access.

Golden Court is in an excellent location, only a short walk from the high street and train station with an extensive bus service outside the door. The development itself benefits from gated parking, private gardens, an on-site manager, residents lounge and laundry room.

### Features

- One Double Bedroom
- Juliette Balcony
- Lift Service to all Floors
- Private Gated Resident Parking
- Communal Gardens
- No Chain

# Golden Court, Isleworth, TW7



Total area (approx.): 48.1 sq. m (517.7 sq. ft)