



London Road, TW7

£350,000

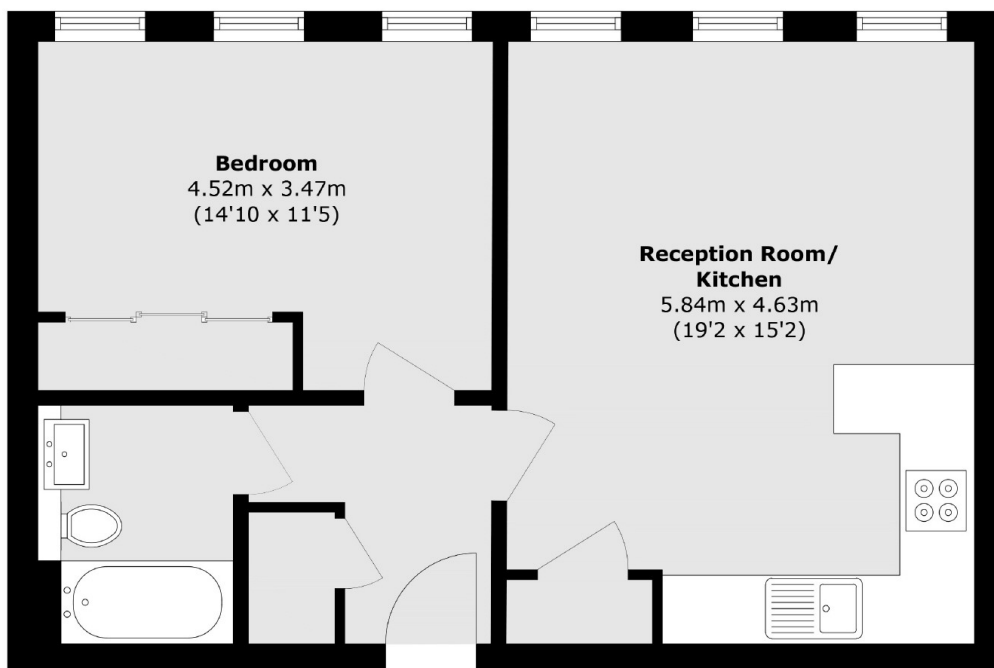
Perfect for first-time buyers or Buy-to-Let investors, this incredibly spacious one-bedroom apartment boasts a modern finish throughout and offers significantly more square footage than your typical one-bed. The property benefits from two storage cupboards, an in-built wardrobe and bathroom cabinet, as well as built-in blinds across six windows. The double-glazed windows are fully soundproofed, providing excellent insulation for year-round comfort. The owners have also purchased a secure allocated parking space, conveniently located close to the back entrance for ease of access. The apartment is being offered with no onward chain.

Positioned within walking distance of the picturesque Syon Park, the historic London home of the Duke of Northumberland, the River Thames, and the renowned London Apprentice pub. The property also enjoys easy access to Richmond, making it a highly desirable location.

Features

- Incredibly Spacious
- First Floor Flat
- Allocated Parking Space
- High Specification
- No Onward Chain
- Long Lease

London Road, Isleworth, TW7



Total area (approx.): 55.7 sq. m (599.5 sq. ft)