



Roxborough Avenue, TW7

£850,000

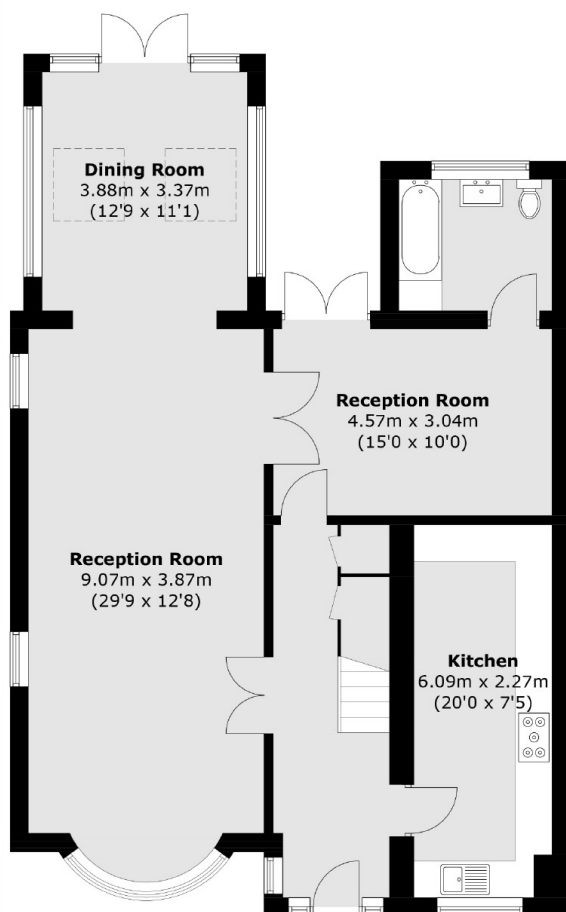
OFFERS IN EXCESS OF A simply beautiful three bedroom detached family home, situated in the popular Northumberland area. The property benefits from a spacious downstairs living area, off street parking and further potential to extend.

The property is located close to Syon Lane station, amenities and parks. There are a number of excellent local schools nearby as well as easy access to the A4 and M4 with routes in and out of London.

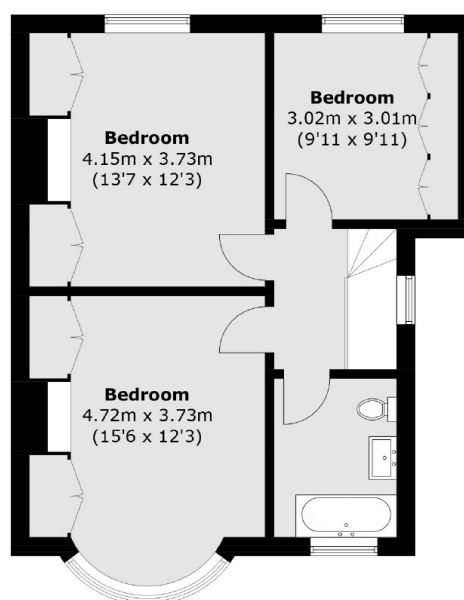
Features

- Detached
- Three Bedrooms
- Two Bathrooms
- Beautifully Presented
- Potential to Extend STPP
- Excellent Location

Roxborough Avenue, Isleworth, TW7



Ground Floor



First Floor

Total area (approx.): 151.3 sq. m (1,628.5 sq. ft)