



Otterburn Gardens, TW7

£449,950

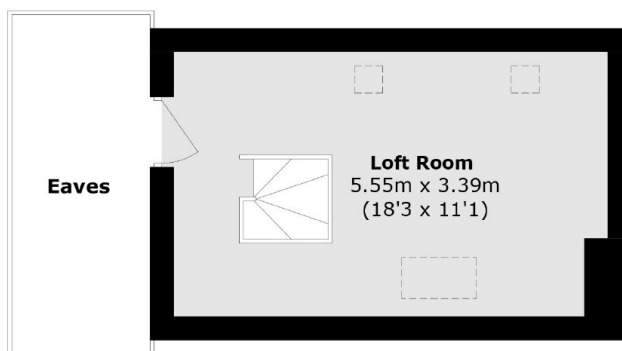
We are delighted to bring to the market this beautiful and immaculately presented two double bedroom first floor maisonette set on the popular Duke Of Northumberland Estate. Offering more than 870 square feet of generous living space, this property boasts a generous size loft space (arranged as a third bedroom), a large reception/dining room and separate kitchen. Further benefits include a spacious private rear garden and over 900 years remaining on the lease.

Otterburn Gardens is superbly situated on a quiet residential road close to Syon Lane (South Western Trains) and Osterley (Piccadilly line) stations, as well as local parks, schools and amenities. There is also easy access to the M4, as well as neighbouring areas of Brentford, Chiswick and Ealing.

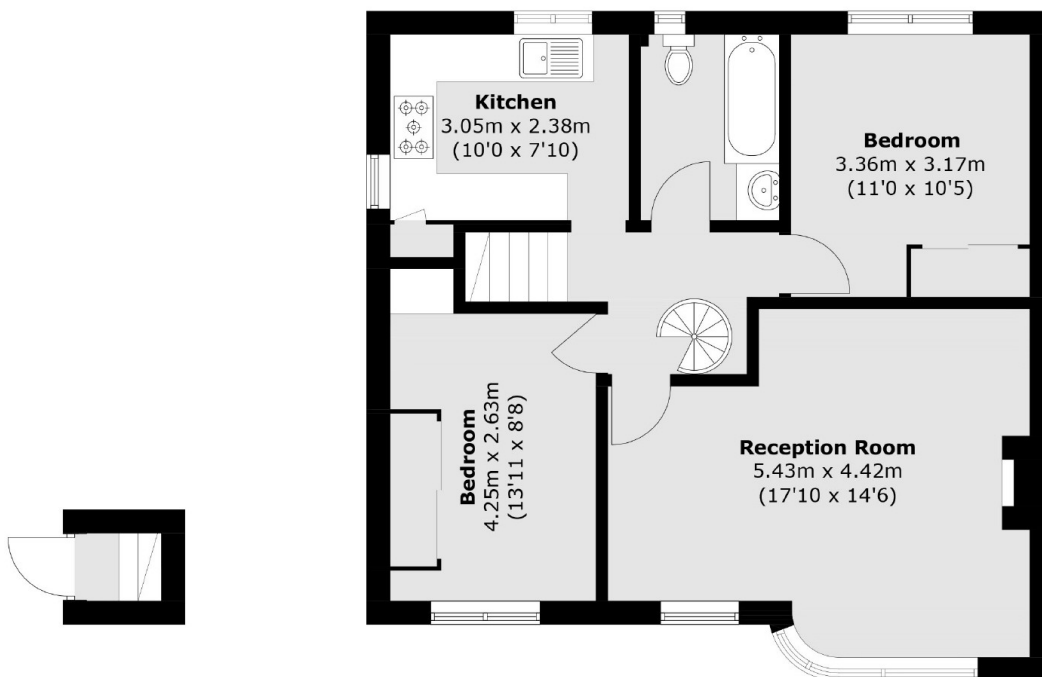
Features

Beautifully Presented
Share of Freehold
Two Double Bedrooms
Loft Bedroom
Private Rear Garden
Sought After Road

Otterburn Gardens, Isleworth, TW7



Second Floor (Loft)



Ground Floor

First Floor

Total area (approx.): 81.2 sq. m (874.0 sq. ft)
(Excluding Eaves)