

## London Road, TW7

£335,000

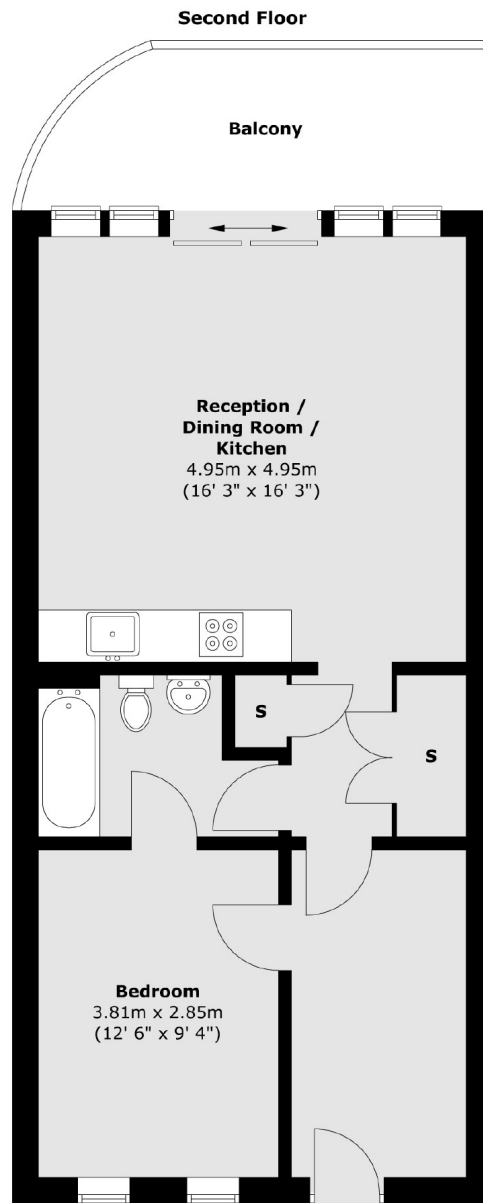
A well presented spacious one double bedroom apartment located within a gated development in the centre of Isleworth. The property benefits from a private balcony, lift service and allocated parking.

Odeon Parade is situated on London Road in the heart of Isleworth, ideally placed for access to all the local shops and amenities plus the Isleworth overground Station.

### Features

- One Double Bedroom
- First Floor
- Well Presented
- Allocated parking
- Private Balcony
- Long Lease

## London Road, Isleworth, TW7



Total area (approx.) : 54.9 sq. m (591 sq. ft)  
Total balcony area (approx.) : 9.2 sq. m (99 sq. ft)

### Contact

To arrange a viewing call our office on the number below or visit our website.



Energy Rating: . We aim to make our particulars both accurate and reliable. However they are not guaranteed; nor do they form part of an offer or contract. If you require clarification on any points then please contact us, especially if you're traveling some distance to view. Please note that appliances and heating systems have not been tested and therefore no warranties can be given as to their good working order.