



## Thornbury Avenue, TW7

### £375,000

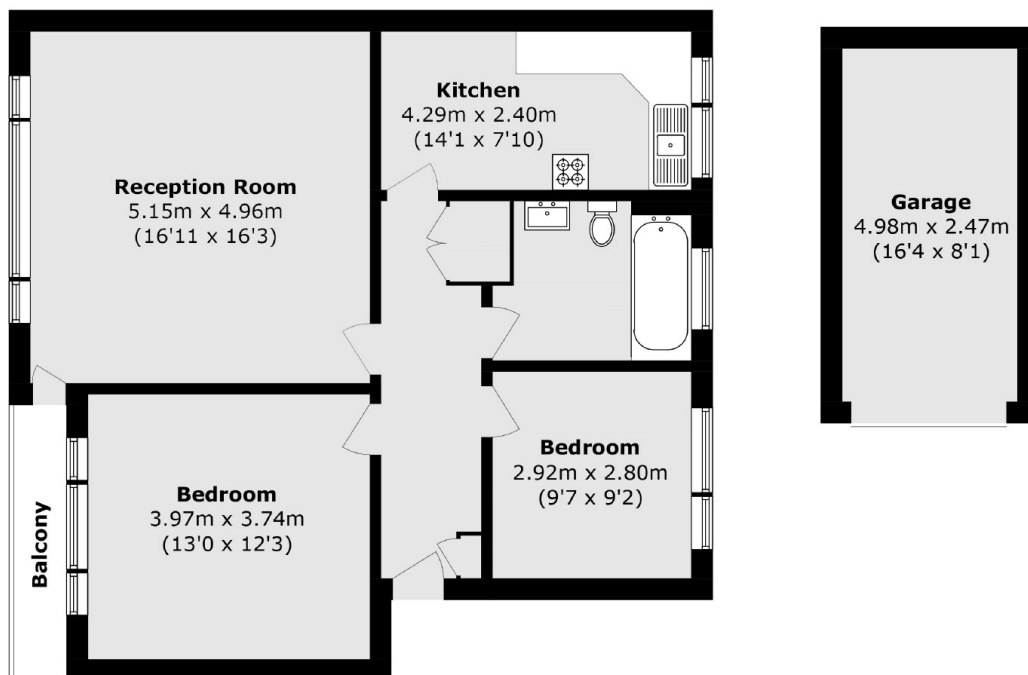
We are delighted to bring to the market this larger than average first floor apartment offering almost 800 square feet of generous living space comprising of two double bedroom, separate kitchen, large lounge/reception room and private balcony. Further benefits include a share of the freehold, garage, parking and low service charge.

Orchard Court is a popular and sought after development situated at the end of a quiet cul-de-sac just off Thornbury Avenue and is conveniently located with Osterley tube station (Piccadilly Line) a short walk away serving Heathrow and Central London. Isleworth Train station is close by offering train services to Waterloo.

### Features

- Share of Freehold
- First Floor Apartment
- Two Bedrooms
- Larger Than Average
- Garage and Parking
- Balcony

# Thornbury Avenue, Isleworth, TW7



Total area (approx.): 74.1 sq. m (797.6 sq. ft)

Balcony area (approx.): 3.2 sq. m (34.4 sq. ft)

Garage (approx.): 12.3 sq. m (132.4 sq. ft)