



## Penwerris Avenue, TW7

### £800,000

This stunning semi-detached freehold house is located on one of Osterley's most sought after roads. Arranged over three floors, this immaculately presented and energy efficient home has three bedrooms, two bathrooms and a gorgeous reception/dining room on the lower ground floor which opens up onto a delightful courtyard - a fantastic wow-factor space when entertaining friends and family. Further benefits include a delightful private garden with side access to the street, in addition to a NHBC warranty.

Located on one of the most sought after residential roads in Osterley and Isleworth, this house is located moments away from Osterley Park and House offering beautiful open green spaces of this tremendous and iconic National Park. Osterley tube station (Piccadilly line) is a short walk away, as are local schools and amenities.

### Features

- Semi-Detached House
- Three Bedroom
- Two Bathrooms
- Court Yard and Garden
- Immaculately Condition
- Close to Transport Links

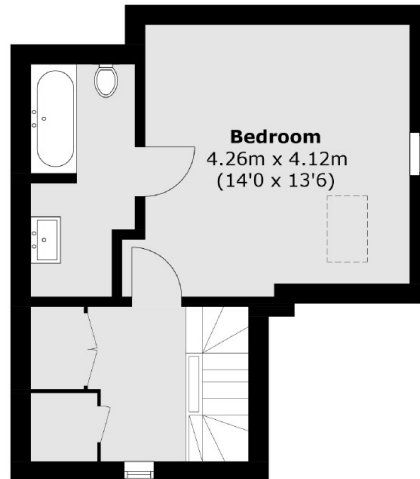
# Penwerris Avenue, Isleworth, TW7



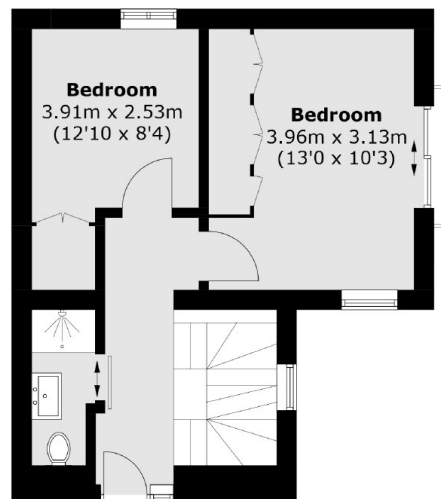
**Lower Ground Floor**



**Lower Ground Floor**



**First Floor**



**Ground Floor**

Total area (approx.): 103.2 sq. m (1110.8 sq. ft)