



Mogden Lane, TW7

£325,000

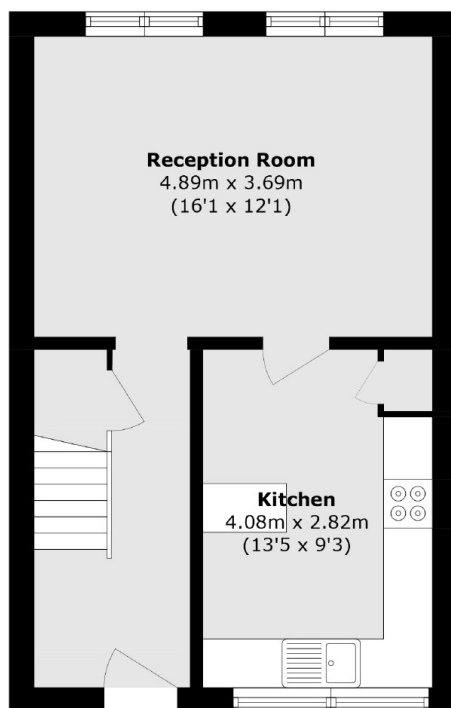
Offered to the market with no onward chain is this delightful top floor, split-level apartment. The property offers 889 square feet of generous living space, and comprises of two double bedrooms, large reception room and separate kitchen. Further benefits include a low service charge, in addition to two good size storage rooms on the ground floor.

Superbly positioned close to local amenities and a short walk to Twickenham Station and high street with a variety of shops and restaurants. There is easy access to A316 with routes in and out of London.

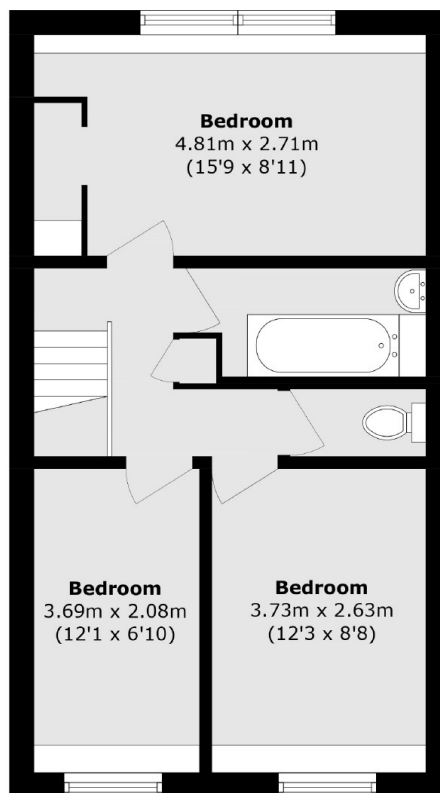
Features

- Top Floor Split-Level Apartment
- Two Double Bedrooms
- Two External Storage Rooms
- Larger Than Average
- Central Location
- No Chain

Mogden Lane, Isleworth, TW7



Ground Floor



First Floor

Total area (approx.): 82.6 sq. m (889.1 sq. ft)

Dexters

Isleworth
568 London Road
Isleworth
TW7 4EP
Sales
020 8560 1177

Energy Rating: C. We aim to make our particulars both accurate and reliable. However they are not guaranteed; nor do they form part of an offer or contract. If you require clarification on any points then please contact us, especially if you're traveling some distance to view. Please note that appliances and heating systems have not been tested and therefore no warranties can be given as to their good working order.

 **RICS** | Regulated
Estate Agent
and Letting Agent

[dexters.co.uk](https://www.dexters.co.uk)