



## Richens Close, TW3

### £269,950

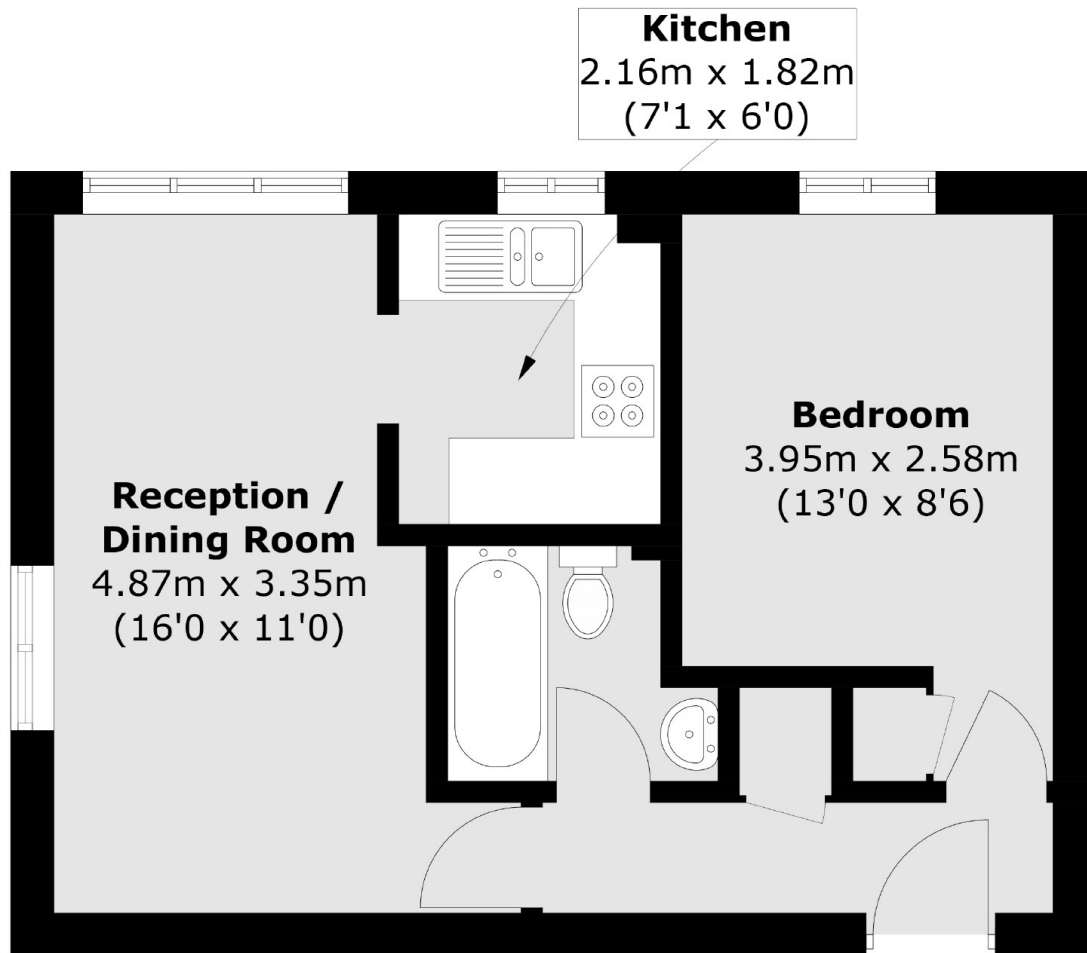
Offered to the market with no onward chain is this delightful one double bedroom ground floor apartment situated in a popular and sought after gated development. Further benefits include a long lease and low service charge.

Richens Close is situated close to Hounslow East station (Piccadilly line) with easy links to Heathrow Airport and London as well as the High Street which hosts a variety of shops and restaurants.

### Features

- Ground Floor Apartment
- One Double Bedroom
- Residents Parking
- Gated Development
- No Chain
- Close to Transport

# Richens Close, Hounslow, TW3



Total area (approx.): 34.0 sq. m (366.0 sq. ft)

## Dexters

Isleworth  
568 London Road  
Isleworth  
TW7 4EP  
Sales  
020 8560 1177

Energy Rating: . We aim to make our particulars both accurate and reliable. However they are not guaranteed; nor do they form part of an offer or contract. If you require clarification on any points then please contact us, especially if you're traveling some distance to view. Please note that appliances and heating systems have not been tested and therefore no warranties can be given as to their good working order.

 **RICS** | Regulated  
Estate Agent  
and Letting Agent

[dexters.co.uk](https://www.dexters.co.uk)