



Christabel Close, TW7

£369,950

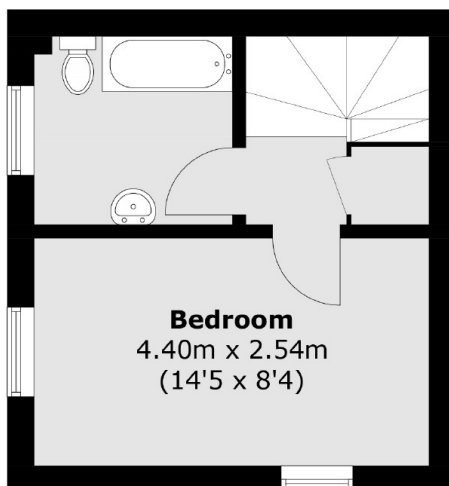
We are pleased to present a rare opportunity to purchase an immaculate one bedroom house located within a residential gated development. The property benefits from recent refurbishment as well as off street parking and a private garden with stunning views of The Duke Of Northumberland River. Viewings highly recommended!

The property is conveniently located close to local amenities, parks and schools. Both Hounslow East (Piccadilly line) and Isleworth stations are nearby offering excellent transport links. Neighbouring areas of Twickenham, Richmond and St Margarets are also within easy reach.

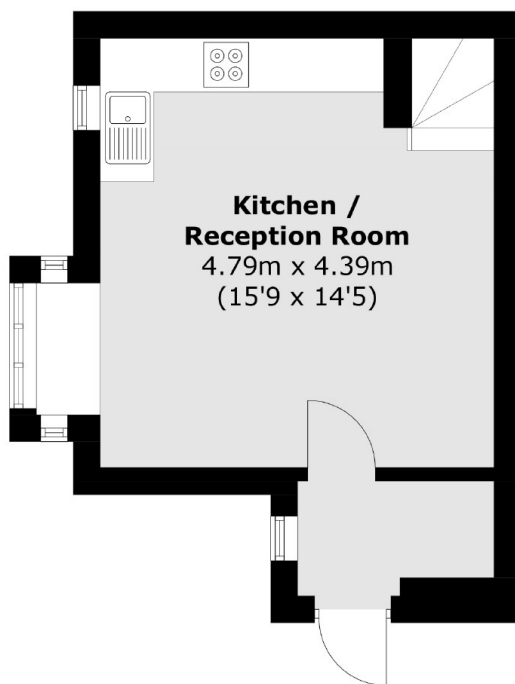
Features

- End of Terrace House
- One Double Bedroom
- Beautifully Refurbished
- Private Garden
- Off-Street Parking
- Gated Development

Christabel Close, Isleworth, TW7



First Floor



Ground Floor

Total area (approx.): 46.4 sq. m (499.4 sq. ft)