



Garland Drive, TW3

£525,000

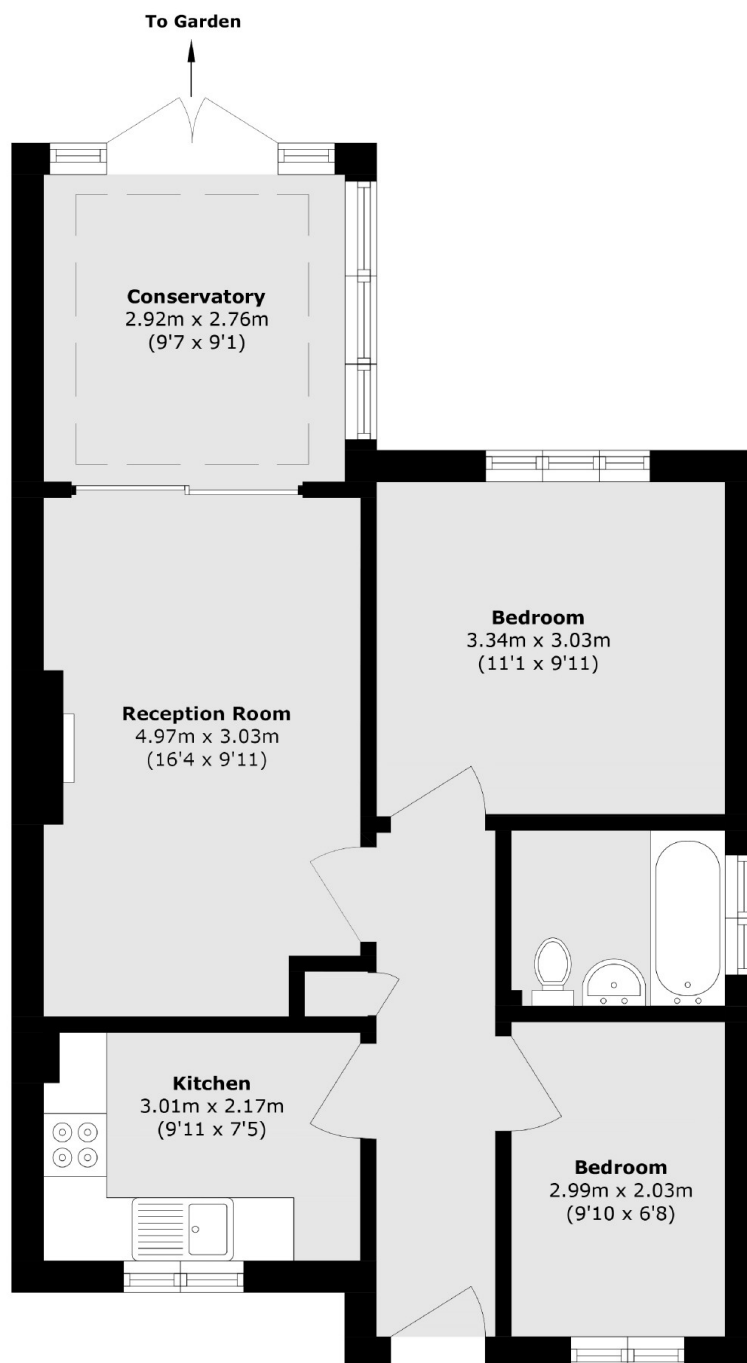
Offered to the market with no onward chain is a rare and unique opportunity to purchase this delightful detached two bedroom bungalow. Benefits include a driveway in addition to a rear extended conservatory overlooking a beautiful, private garden. We love the central location and quiet location of Garland Drive

Garland Drive superbly and conveniently located with Hounslow East Tube (Piccadilly line) a short walk away. A vast array of shops, restaurants and bars are close by, as well as local schools and parks. There is easy access to Isleworth, Whitton and Twickenham.

Features

Detached Bungalow
Two Bedrooms
Private Garden
Driveway
Conservatory
No Chain

Garland Drive, Hounslow, TW3



Total area (approx.): 58.6 sq. m (630.7 sq. ft)

Dexters

Isleworth
568 London Road
Isleworth
TW7 4EP
Sales
020 8560 1177

Energy Rating: . We aim to make our particulars both accurate and reliable. However they are not guaranteed; nor do they form part of an offer or contract. If you require clarification on any points then please contact us, especially if you're traveling some distance to view. Please note that appliances and heating systems have not been tested and therefore no warranties can be given as to their good working order.

 **RICS** | Regulated
Estate Agent
and Letting Agent

[dexters.co.uk](https://www.dexters.co.uk)