



North Drive, TW3

£849,950

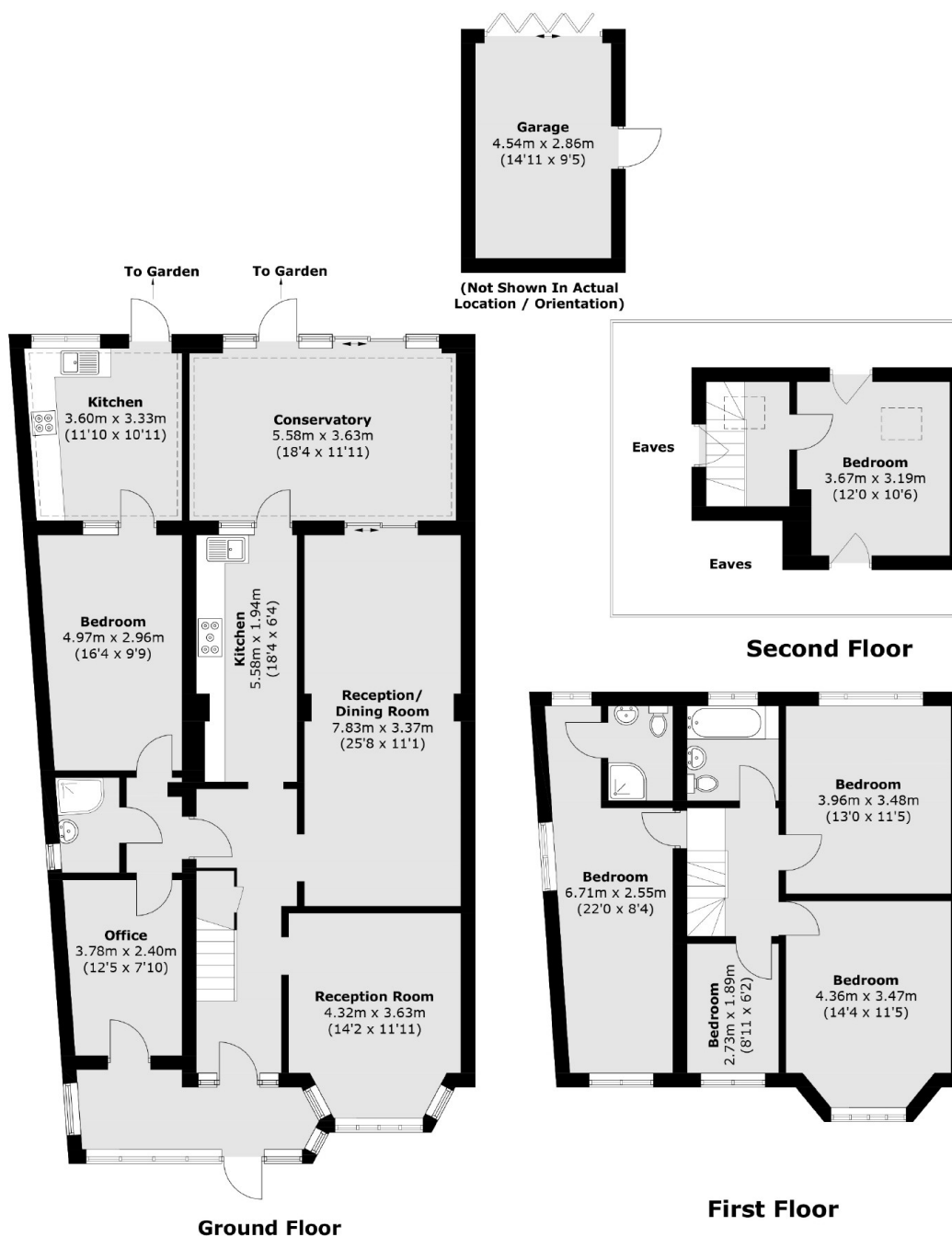
This exceptional semi-detached corner plot house spans an impressive 2,430 square feet of generous living space, comprising of six bedrooms, three bathrooms, study room, two reception rooms and conservatory. Further benefits include a driveway for multiple cars, garage and large rear garden.

North Drive is situated within easy reach of the large selection of shops, eateries and entertainment facilities in Hounslow town centre. Hounslow East and Isleworth stations are close by, as well as the A4 for motorists.

Features

- Semi Detached
- Corner Plot
- Six Bedrooms/Three
- Bathrooms
- Garage and Off Street Parking
- Large Garden
- Close to Transport Links

North Drive, Hounslow, TW3



Total area (approx.): 225.7 sq. m (2,429.4 sq. ft)
Garage: 13.5 sq. m (145.3 sq. ft)
(Excluding Eaves)

Dexters

Isleworth
568 London Road
Isleworth
TW7 4EP
Sales
020 8560 1177

Energy Rating: C. We aim to make our particulars both accurate and reliable. However they are not guaranteed; nor do they form part of an offer or contract. If you require clarification on any points then please contact us, especially if you're traveling some distance to view. Please note that appliances and heating systems have not been tested and therefore no warranties can be given as to their good working order.

RICS Regulated
Estate Agent
and Letting Agent

dexters.co.uk