



## Inwood Road, TW3

### £475,000

A superb three bedroom period property situated in the heart of Hounslow, opposite to the open green spaces of Inwood Park. The property benefits from two spacious reception rooms, separate kitchen and a private garden. Offered to the market with no onward chain.

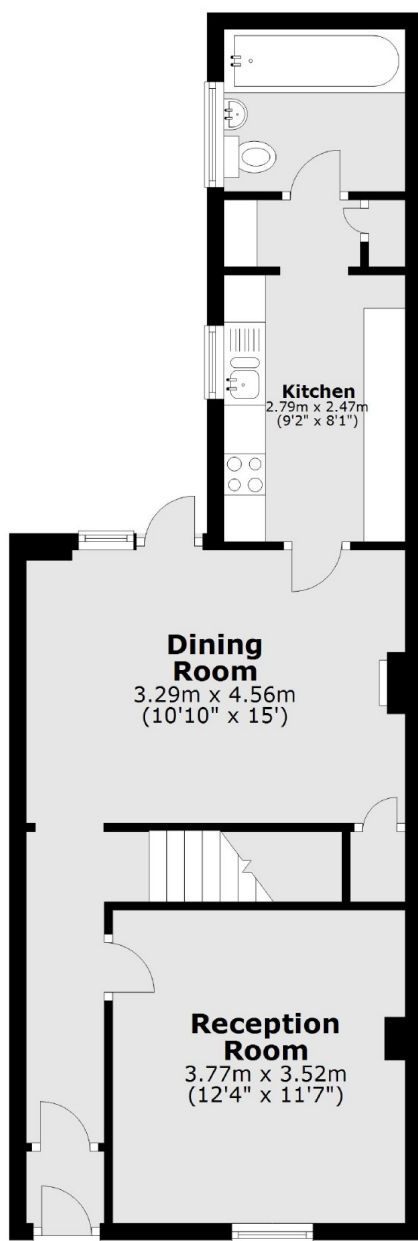
Inwood Road is located on the doorstep of Hounslow High with a variety of shops and restaurants, as well as a short walk to Hounslow East station (Piccadilly line) and local schools.

### Features

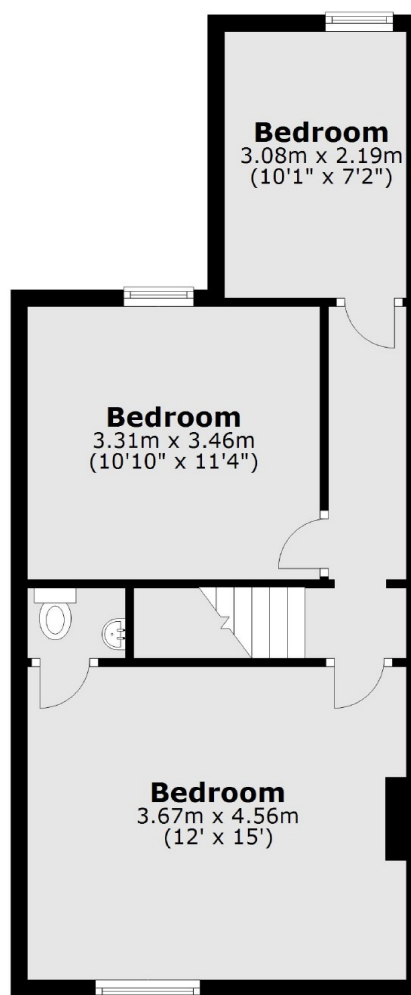
- Freehold
- Period Property
- Three Bedrooms
- Two Reception Rooms
- Garden
- Moments To Amenities

# Inwood Road, Hounslow, TW3

## Ground Floor



## First Floor



Total area: approx. 94.5 sq. metres (1017.7 sq. feet)

# Dexters

Isleworth  
568 London Road  
Isleworth  
TW7 4EP  
Sales  
020 8560 1177

Energy Rating: . We aim to make our particulars both accurate and reliable. However they are not guaranteed; nor do they form part of an offer or contract. If you require clarification on any points then please contact us, especially if you're traveling some distance to view. Please note that appliances and heating systems have not been tested and therefore no warranties can be given as to their good working order.

 **RICS** | Regulated  
Estate Agent  
and Letting Agent

dexters.co.uk