



## Syon Park Gardens, TW7

### £735,000

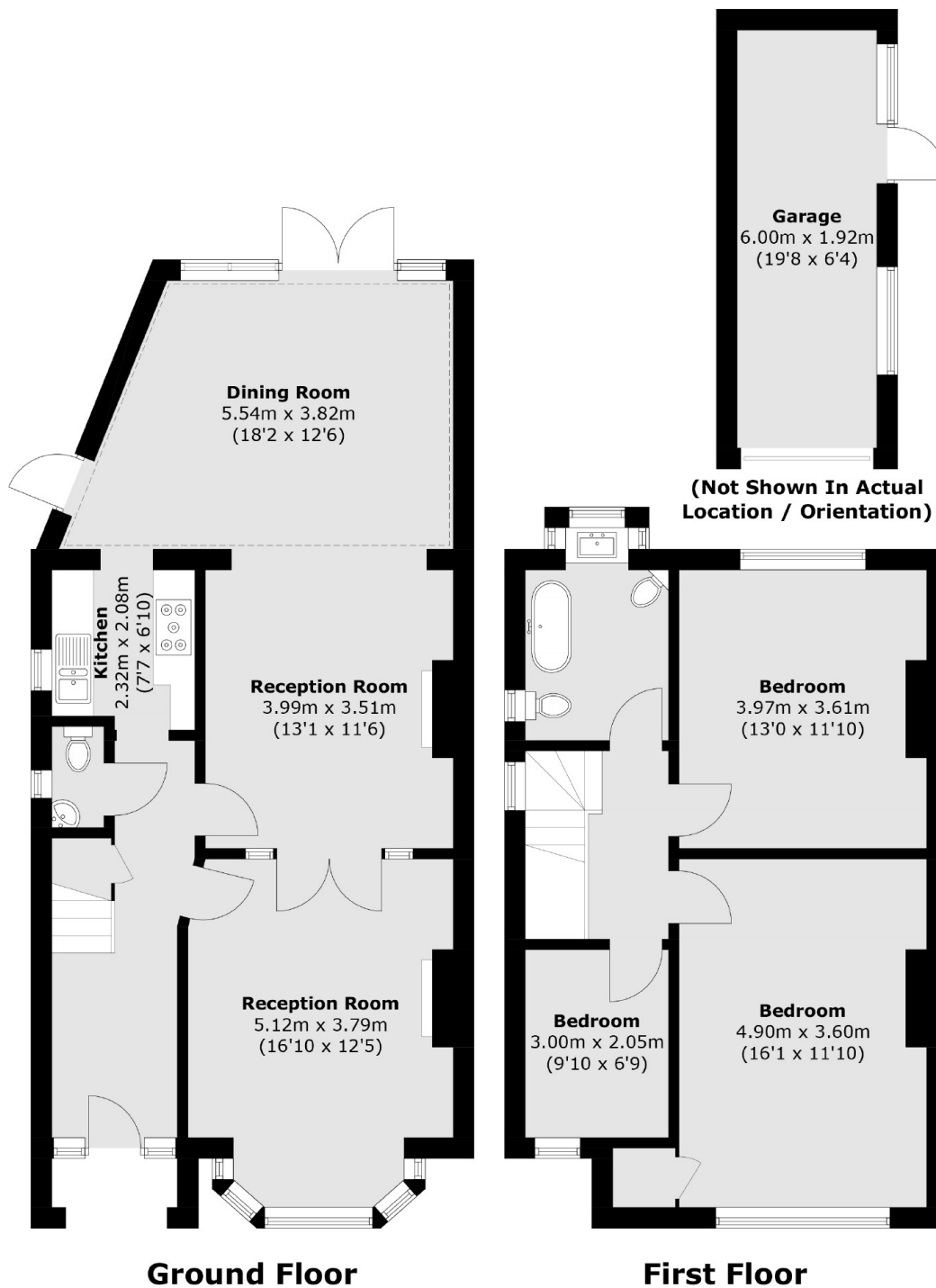
Offered to the market with no onward chain is this beautiful semi-detached property is currently arranged as a substantial 4 bedroom family home, offering a large ground floor front bedroom with feature fireplace, reception room, dining room, kitchen and downstairs WC. The first floor comprises a further three bedrooms and immaculate family bathroom. Further benefits include a large driveway for 2/3 cars, garage, large rear garden. There is scope to extend into the loft and rear subject to planning permission

Syon Park Gardens is a sought after road conveniently located for Osterley Tube Station and Syon Lane overground. Commuter benefit's also include easy access to the A4/M4. Osterley Park and House is a National Trust and a short walk away.

### Features

- Semi-detached
- Three Bedroom
- Off-Street Parking
- Large Garden & Garage
- Scope to Extend (STPP)
- No Chain

# Syon Park Gardens, Isleworth, TW7



Total area (approx.): 122.0 sq. m (1,313.1 sq. ft)  
Garage (approx.): 12.1 sq. m (130.2 sq. ft)

## Dexters

Isleworth  
568 London Road  
Isleworth  
TW7 4EP  
Sales  
020 8560 1177

Energy Rating: E. We aim to make our particulars both accurate and reliable. However they are not guaranteed; nor do they form part of an offer or contract. If you require clarification on any points then please contact us, especially if you're traveling some distance to view. Please note that appliances and heating systems have not been tested and therefore no warranties can be given as to their good working order.

 **RICS** | Regulated  
Estate Agent  
and Letting Agent

dexters.co.uk