



## Golden Court, TW7

### £250,000

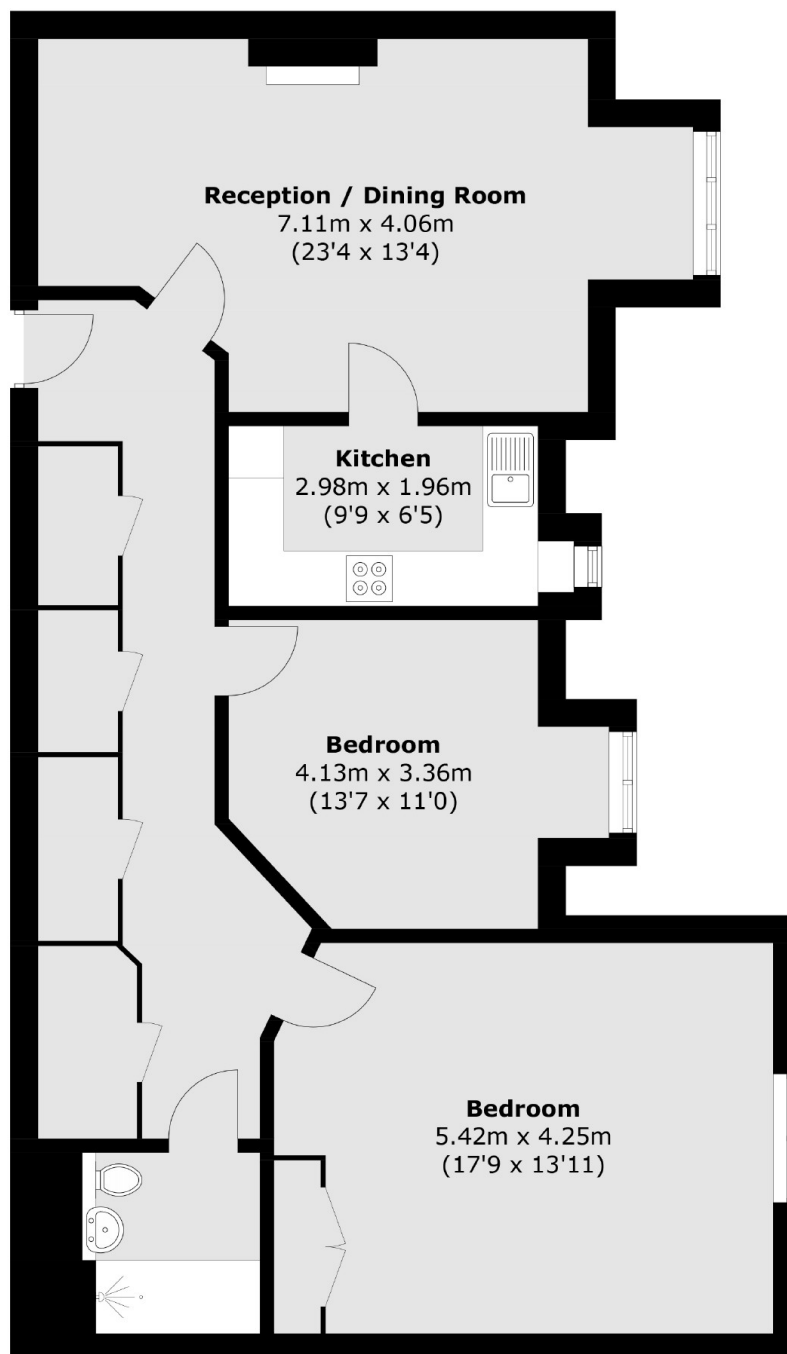
Offered to the market with no onward chain is this bright and spacious two double bedroom retirement home, for over 60s. One of the largest in the development. The property is well presented throughout offering almost 1,000 square feet of generous living space. We love the larger than average reception room and ample storage space. Further benefits include gated parking, lift service, private communal gardens, an on-site manager, library, gym, residents lounge, laundry room and care line access.

Golden Court is in an excellent location, only a short walk from the high street and train station with an extensive bus service outside the door. The development itself benefits from gated parking, private gardens, an on-site manager, residents lounge and laundry room.

### Features

- Two Double Bedrooms
- Almost 1,000 Sq Ft
- Lift Service to all Floors
- Private Gated Resident Parking
- Communal Gardens
- No Chain

# Golden Court, Isleworth, TW7



Total area (approx.): 92.4 sq. m (994.6 sq. ft)

## Dexters

Isleworth  
568 London Road  
Isleworth  
TW7 4EP  
Sales  
020 8560 1177

Energy Rating: C. We aim to make our particulars both accurate and reliable. However they are not guaranteed; nor do they form part of an offer or contract. If you require clarification on any points then please contact us, especially if you're traveling some distance to view. Please note that appliances and heating systems have not been tested and therefore no warranties can be given as to their good working order.

 **RICS** | Regulated  
Estate Agent  
and Letting Agent

[dexters.co.uk](https://www.dexters.co.uk)