



Jersey Road, TW5

£769,995

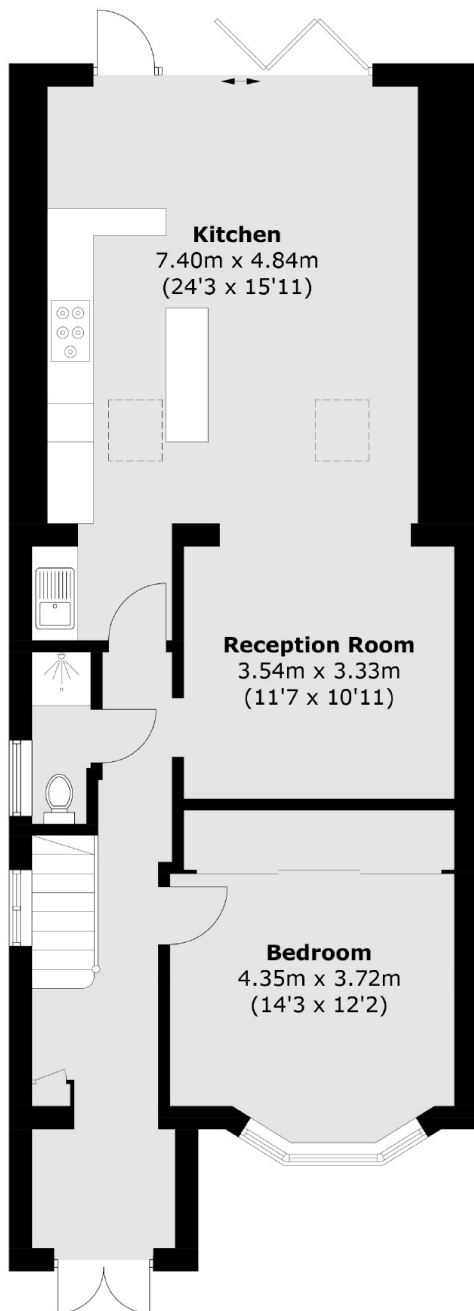
Offered to the market with no onward chain, we are delighted to present this beautiful and immaculate four bedroom, two bathroom semi-detached family home. Located on one of the most sought after roads, this property is arranged over two floors, offering a double reception/dining room with bi-fold door opening out onto a generous landscaped garden. Further benefits include a driveway for multiple cars and further scope to extend into the loft (STPP).

Located a short walk to Osterley station (Piccadilly line), this property is close to excellent transport links. There is easy access to the A4/M4 in and out of London. The property is also situated close to a number of outstanding Ofsted rated schools, local amenities and parks.

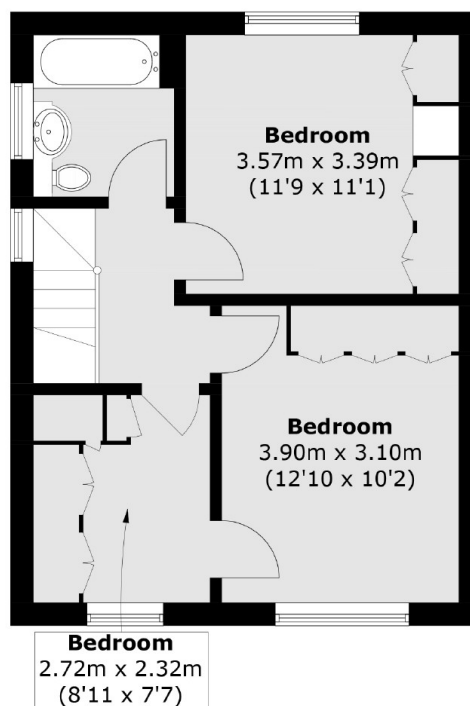
Features

- Semi Detached
- Four Bedrooms
- Two Bathrooms
- Beautifully Presented
- Off Street Parking
- No Chain

Jersey Road, Hounslow, TW5



Ground Floor



First Floor

Total area (approx.): 116.0 sq. m (1,248.6 sq. ft)

Dexters

Isleworth
568 London Road
Isleworth
TW7 4EP
Sales
020 8560 1177

Energy Rating: D. We aim to make our particulars both accurate and reliable. However they are not guaranteed; nor do they form part of an offer or contract. If you require clarification on any points then please contact us, especially if you're traveling some distance to view. Please note that appliances and heating systems have not been tested and therefore no warranties can be given as to their good working order.

 **RICS** | Regulated
Estate Agent
and Letting Agent

[dexters.co.uk](https://www.dexters.co.uk)