



## Gresham Road, TW3

### £995,000

An impressive gated double-fronted semi-detached five bedroom, two bathroom family house on a sought after and popular residential road. Spanning more than 1,880 square feet of generous living space, this substantial family home oozes period features and high ceilings throughout. A sensationally large landscaped garden creates a wow-factor and is a fantastic space for entertaining.

Gresham Road is a popular residential tree-lined road and is a short walk to Osterley tube station (Piccadilly line) with excellent links to Heathrow Airport and Central London. Local shops, schools and parks are all nearby making it a convenient location. Neighbouring areas of Richmond, Twickenham and Chiswick are also within easy reach.

### Features

- Semi-Detached House
- Double-Fronted House
- Five Bedroom / Two Bathrooms
- Large Landscaped Garden
- Gated with Off-Street Parking
- Scope to Extend (STPP)
- No Chain



## Gresham Road, TW3

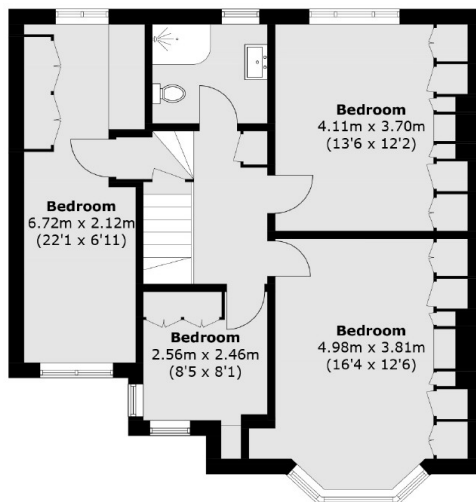
As you enter the property you're welcomed by a large entrance hallway leading to a stunning bay fronted reception room with feature fireplace to the right. To the rear there is a large kitchen and double dining room area that flow superbly to create a wonderful entertaining space with doors leading onto a beautiful private landscaped garden with substantial outbuilding. There is an immaculately presented and convenient shower room/WC in addition to a bedroom/study room on the ground floor.

On the first floor there are a further three bright and spacious double bedrooms with built-in wardrobes, elegant three-piece family bathroom and a further bedroom.

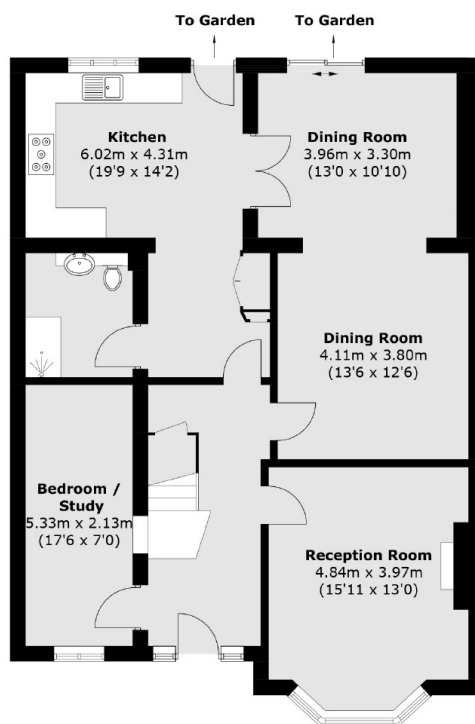




# Gresham Road, Hounslow, TW3



**First Floor**



**Ground Floor**



(Not Shown In Actual  
Location / Orientation)

Total area (approx.): 175.1 sq. m (1884.7 sq. ft)  
Outbuilding: 15.6 sq. m (167.9 sq. ft)