



## Lampton Road, TW3

### £199,950

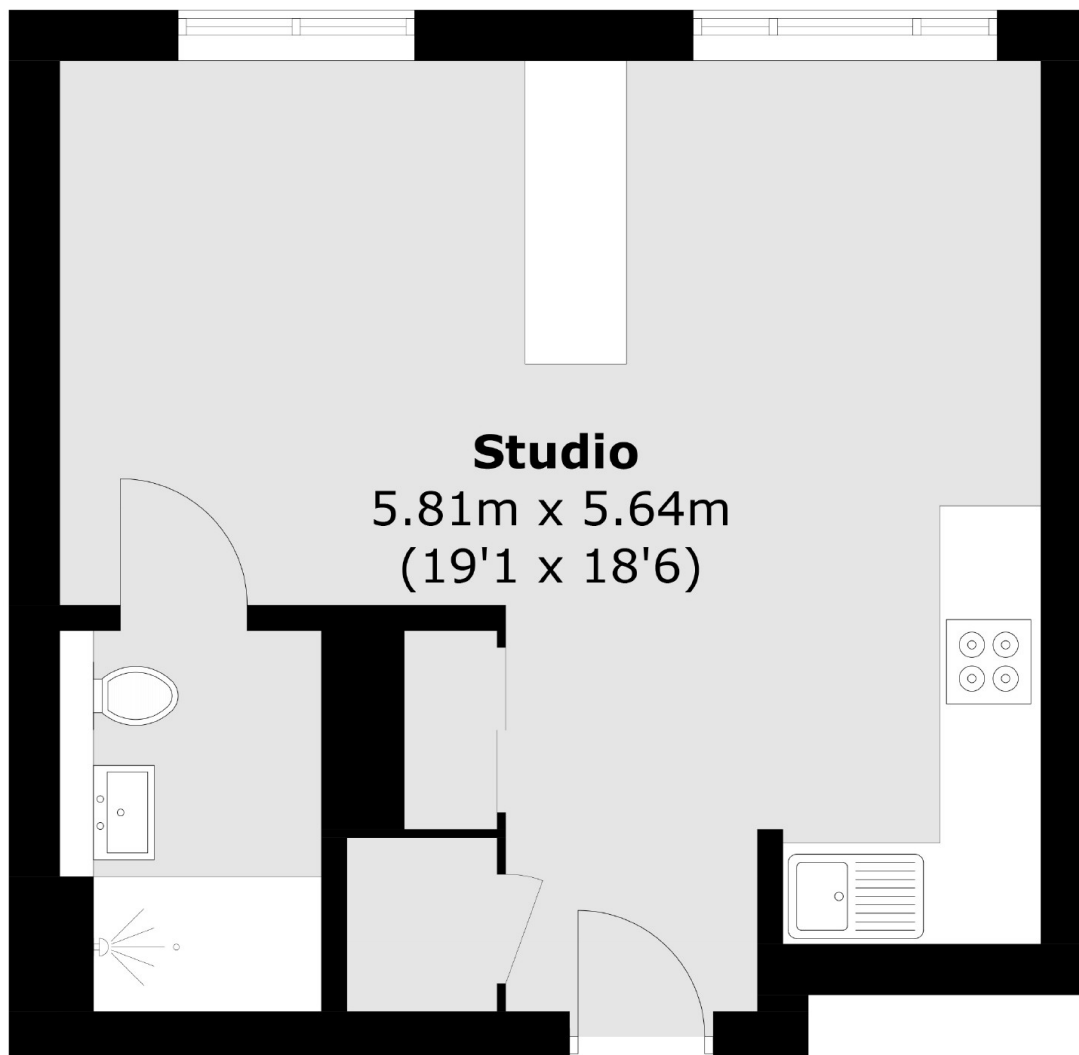
A stunning studio apartment located in a sought after development, with great links to and from central London. The property comes with no onward chain and is ideal for first time buyers and investors. Further benefits include a long lease.

Central House is ideally located in the heart of Hounslow, moments away from Hounslow Central station (Piccadilly line) and an array of shops, bars and restaurants.

### Features

- Studio Apartment
- Second Floor / Lift Service
- Concierge Service
- Immaculate Condition
- Central Location
- Long Lease
- No Chain

# Lampton Road, Hounslow, TW3



Total area (approx.): 32.2 sq. m (346.6 sq. ft)

## Dexters

Isleworth  
568 London Road  
Isleworth  
TW7 4EP  
Sales  
020 8560 1177

Energy Rating: C. We aim to make our particulars both accurate and reliable. However they are not guaranteed; nor do they form part of an offer or contract. If you require clarification on any points then please contact us, especially if you're traveling some distance to view. Please note that appliances and heating systems have not been tested and therefore no warranties can be given as to their good working order.

 **RICS** | Regulated  
Estate Agent  
and Letting Agent

[dexters.co.uk](https://www.dexters.co.uk)