



Lampton Road, TW3

£375,000

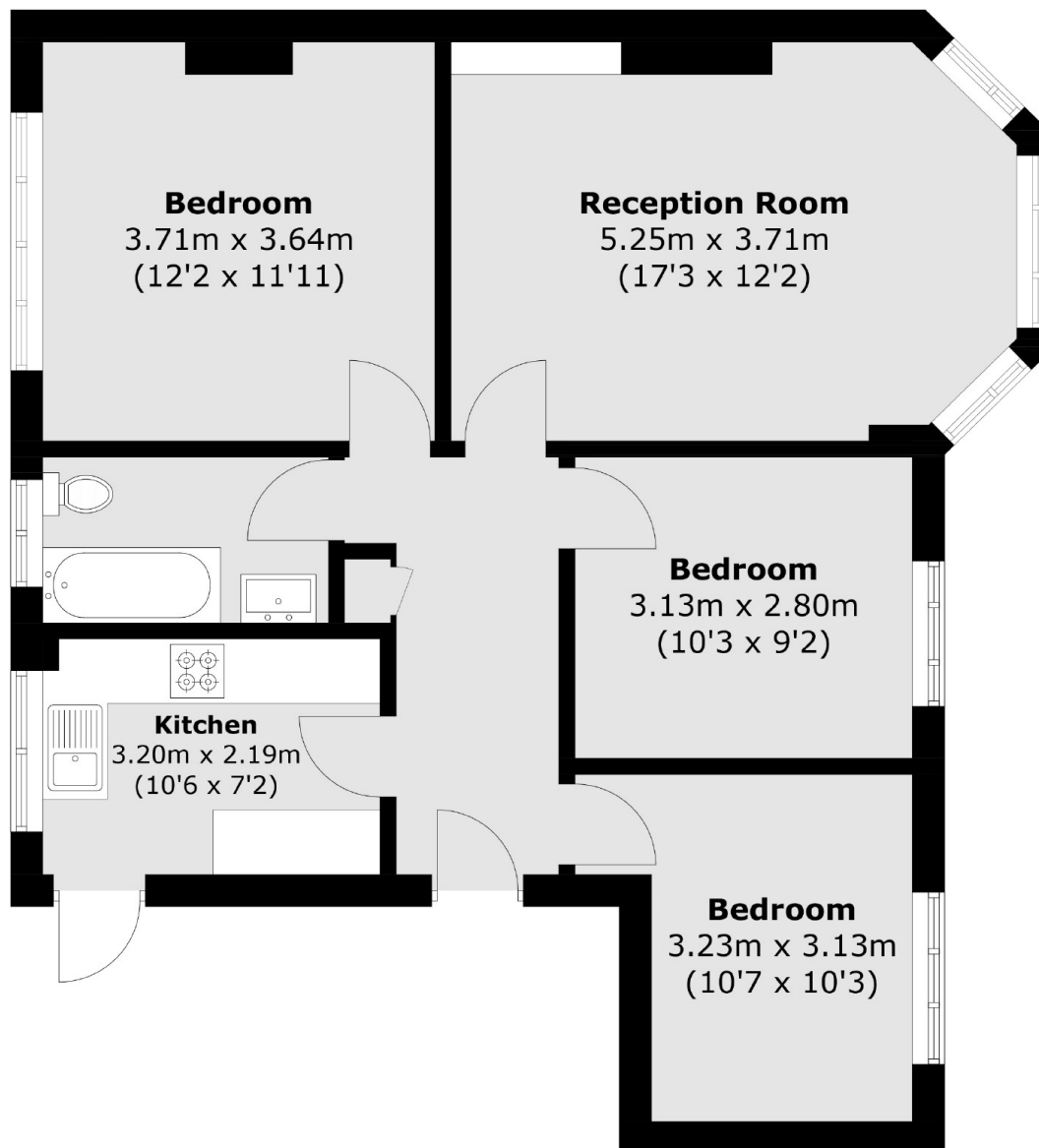
Offered to the market with no onward chain is this spacious three bedroom, one bathroom apartment. Further benefits include a further reception room, separate kitchen, long lease and unallocated parking.

Lampton Court is located on Lampton Road and provides easy access to the A4 and Osterley Park, with Hounslow Central and Hounslow East Tube Stations (Piccadilly Line) only 0.5 miles away.

Features

- Three Bedroom Apartment
- First Floor
- Long Lease
- Unallocated Parking
- Central Location
- No Chain

Lampton Road, Hounslow, TW3



Total area (approx.): 71.0 sq. m (764.2 sq. ft)