



## Draper Close, TW7

### £749,950

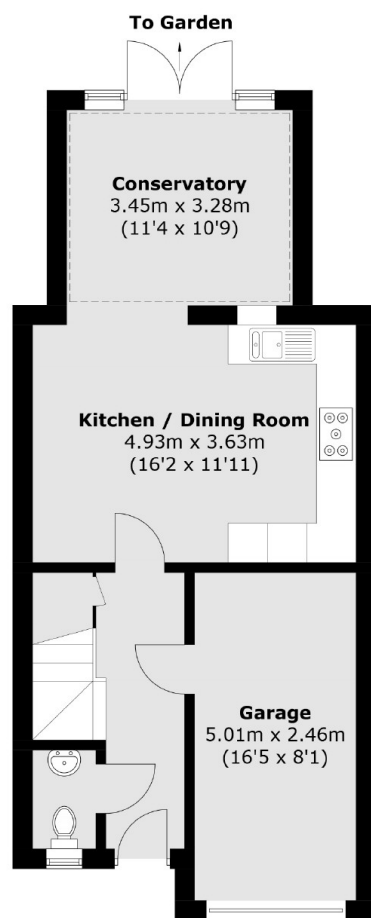
Offered to the market with no onward chain is this beautifully presented three/four bedroom town house situated in a sought after modern development in the heart of Isleworth. Spanning three floors this stunning property offers a spacious open plan kitchen with all appliances, with a beautiful conservatory leading to a quaint private garden with rear access and a downstairs WC.

Draper Close is positioned in a desirable and sought after gated development in Isleworth, close a vast array of shops, bars and restaurants, Draper close is conveniently located between Isleworth overground and Osterley underground stations (Piccadilly line) in addition to many parks and highly regarded schools. There is easy access to neighbouring areas of St Margarets, Twickenham, Kew, Chiswick, Richmond and the A4/M4

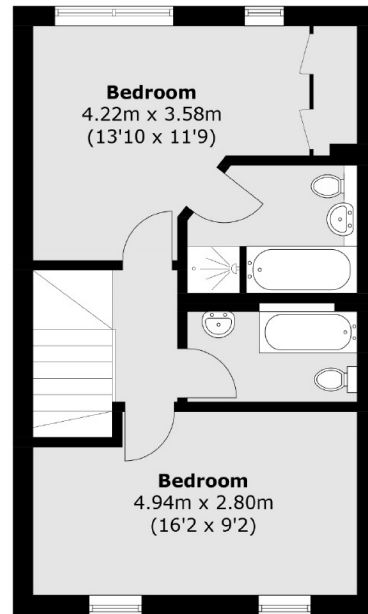
### Features

- Townhouse
- Gated Development
- Three/Four Bedrooms
- Three Bathrooms & WC
- Garage / Parking x 2 Cars
- No Chain

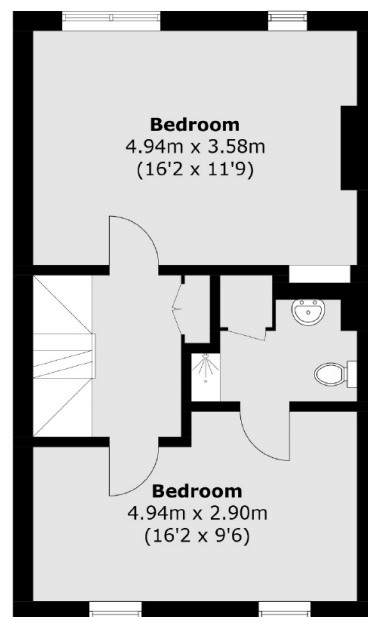
# Draper Close, Isleworth, TW7



**Ground Floor**



**Second Floor**



**First Floor**

Total area (approx.): 139.0 sq. m (1,496.2 sq. ft)

## Dexters

Isleworth  
568 London Road  
Isleworth  
TW7 4EP  
Sales  
020 8560 1177

Energy Rating: . We aim to make our particulars both accurate and reliable. However they are not guaranteed; nor do they form part of an offer or contract. If you require clarification on any points then please contact us, especially if you're traveling some distance to view. Please note that appliances and heating systems have not been tested and therefore no warranties can be given as to their good working order.

**RICS** | Regulated  
Estate Agent  
and Letting Agent

dexters.co.uk