



## London Road, TW7

£425,000

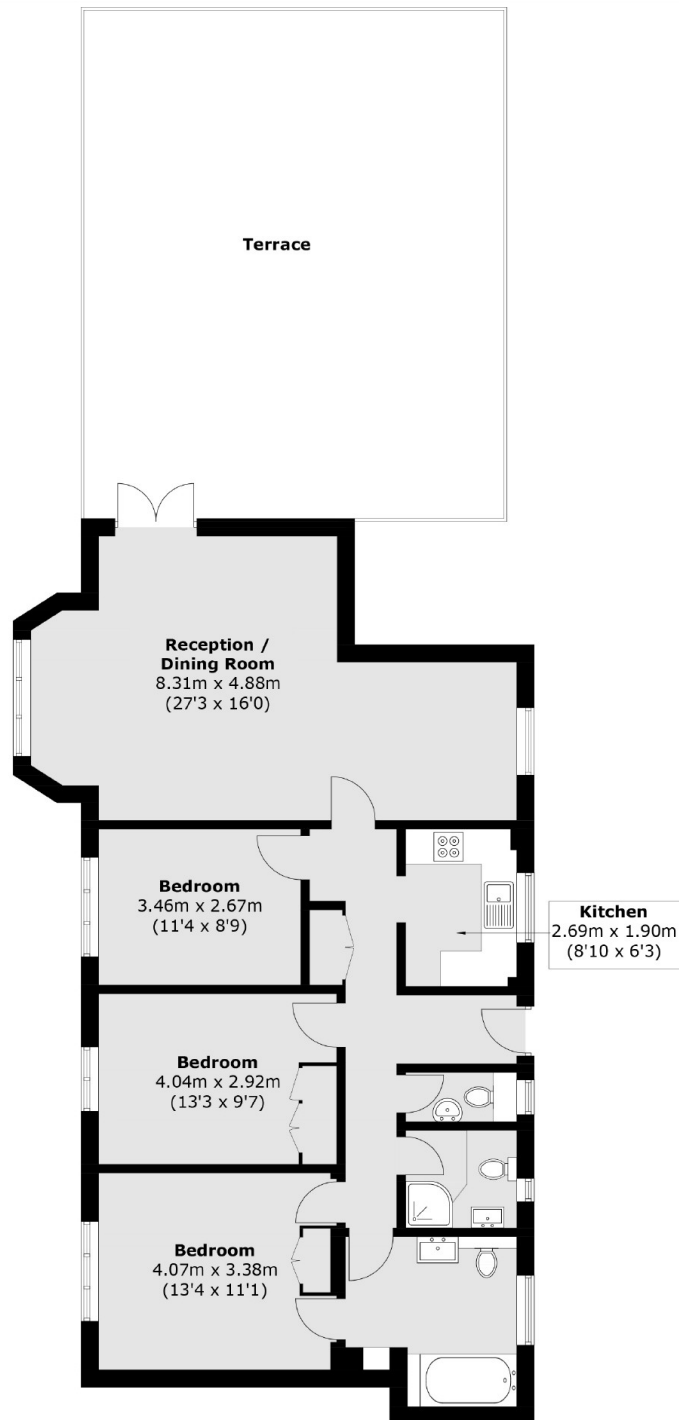
Offered to the market with no onward chain is this delightful three double bedroom penthouse apartment conveniently located with Isleworth's mainline station a short walk away. Spanning almost 1,080 square feet of generous living space, further benefits include two bathrooms, a recently renovated kitchen, solid wood flooring, and an impressive private roof terrace. There is also local permit parking available.

This apartment is situated close to local amenities, transport links and local schools and parks. Isleworth and Osterley stations both offer convenient train and tube links in and out of London.

### Features

- Large Roof Terrace
- Three Bedroom /Two Bathroom
- Newly Renovated
- Close to Isleworth Station
- Permit Parking Available
- No Chain

# London Road, Isleworth, TW7



Total area (approx.): 100.3 sq. m (1,079.6 sq. ft)  
Terrace: 62.5 sq. m (672.7 sq. ft)