



Christabel Close, TW7

£489,950

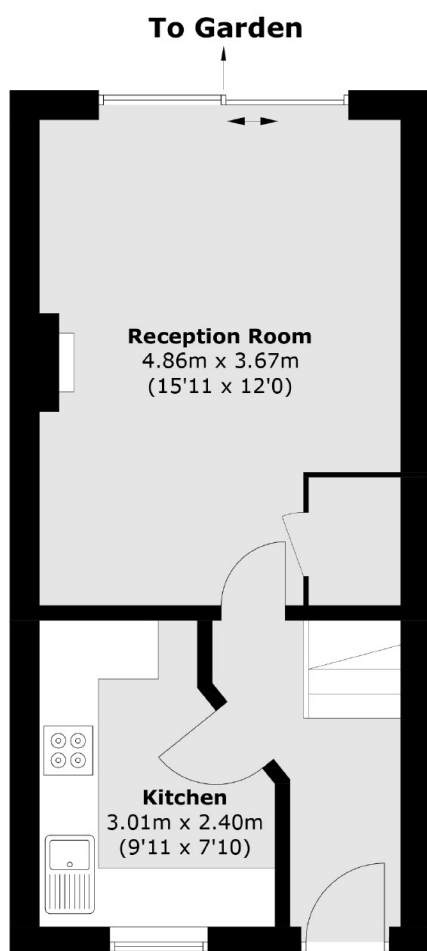
A rare riverside terraced family home with direct views over the Duke of Northumberland River situated in a quiet and highly sought after gated development. This light and bright house is well presented throughout and has fantastic views of the river which is on your doorstep. Further benefits include a separate kitchen, large reception/dining room leading onto a private garden and allocated parking.

Located in a modern and tranquil gated development, Christabel Close is positioned next to the idyllic Duke of Northumberland's River, with excellent shops, parks and school close by. There is easy access to local transport as well as neighbouring areas of Twickenham, St Margarets and Richmond

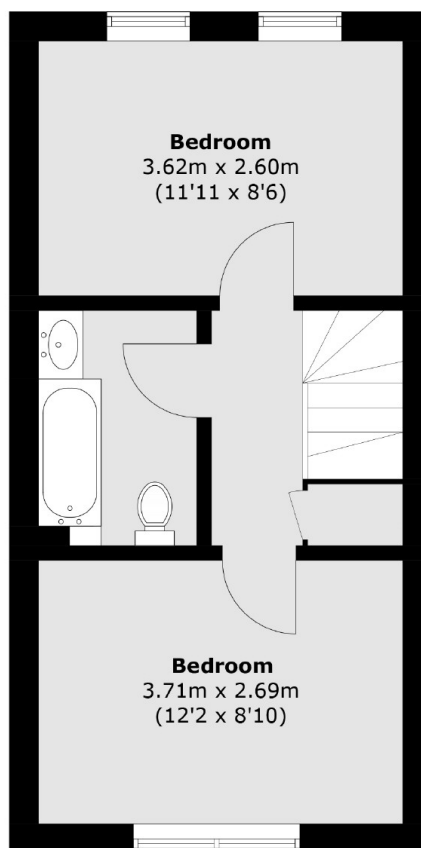
Features

- Two Double Bedroom House
- Gated Development
- River Views
- Private Garden
- No Chain
- Allocated Parking

Christabel Close, Isleworth, TW7



Ground Floor



First Floor

Total area (approx.): 60.4 sq. m (650.1 sq. ft)