



Primrose Place, TW7

£385,000

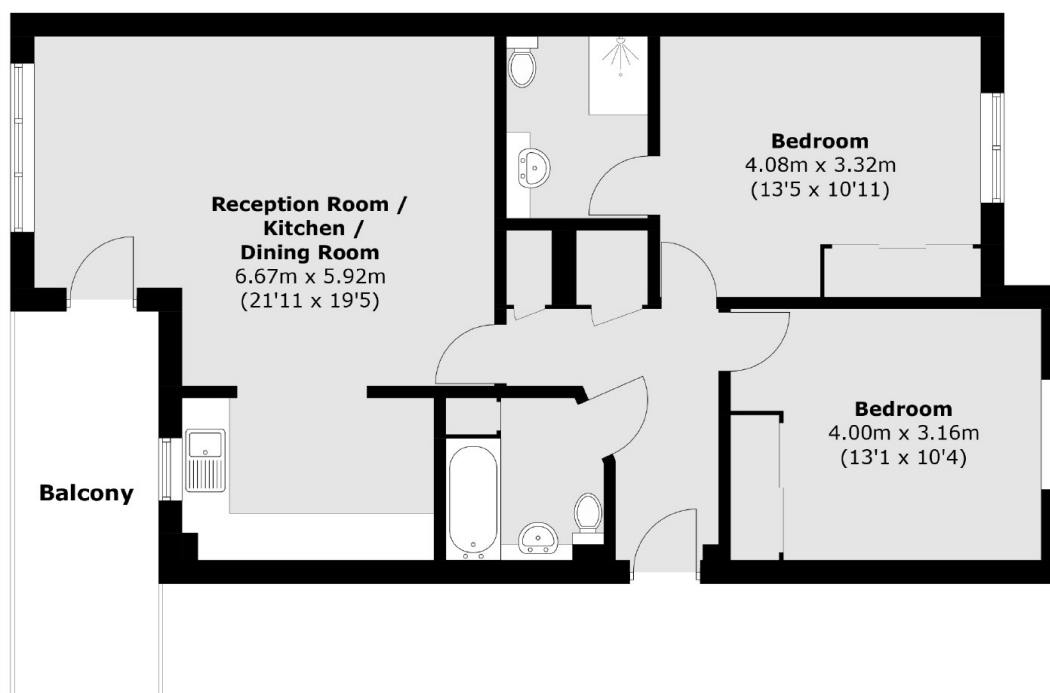
Offered to the market with no onward chain is this delightful and larger than average two double bedroom, two bathroom apartment located on the fourth floor of this popular development. Further benefits include a long lease and allocated parking.

Primrose Place is situated in the heart of Isleworth and offers easy access to Isleworth BR mainline station, whilst the shops and amenities of Isleworth, St Margaret's and Richmond are within easy reach.

Features

- Two Double Bedrooms
- Two Bathrooms
- Balcony with Stunning Views
- Allocated Parking
- Popular Development
- No Chain

Primrose Place, Isleworth, TW7



Total area (approx.): 76.4 sq. m (822.4 sq. ft)
Balcony : 8.9 sq. m (95.8 sq. ft)

Dexters

Isleworth
568 London Road
Isleworth
TW7 4EP
Sales
020 8560 1177

Energy Rating: C. We aim to make our particulars both accurate and reliable. However they are not guaranteed; nor do they form part of an offer or contract. If you require clarification on any points then please contact us, especially if you're traveling some distance to view. Please note that appliances and heating systems have not been tested and therefore no warranties can be given as to their good working order.

 **RICS** | Regulated
Estate Agent
and Letting Agent

[dexters.co.uk](https://www.dexters.co.uk)