



Hanworth Road, TW4

£320,000

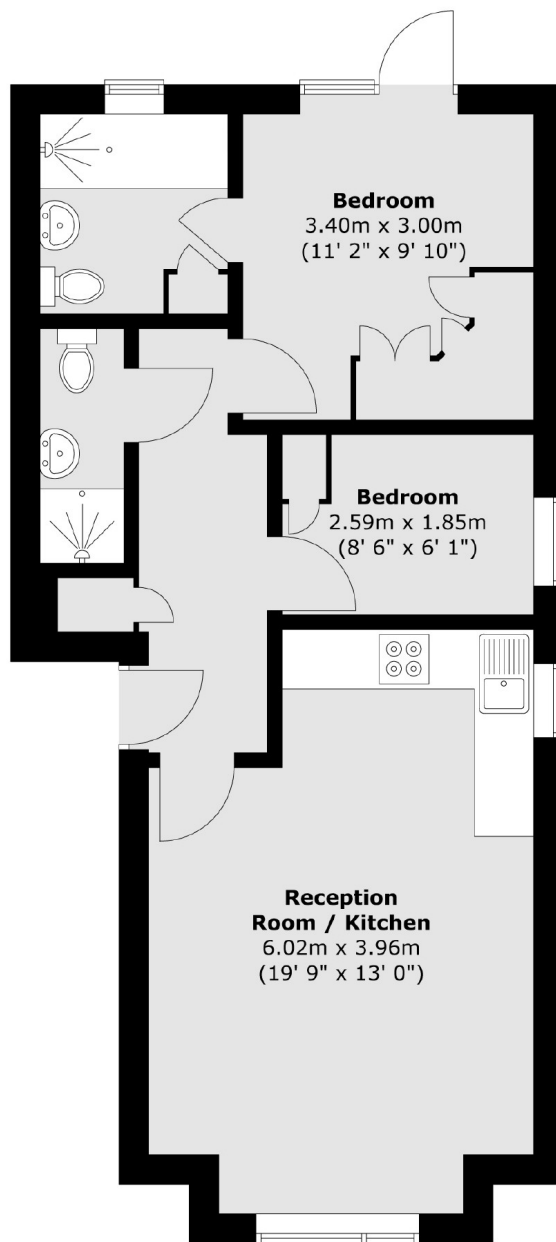
Offered to the market with no onward chain, we are delighted to bring to the market this spacious two bedroom, two bathroom apartment. Located on the ground floor, further benefits include a spacious open-plan kitchen/dining/reception room, long lease and parking for residents.

Hanworth Road is ideally located and within walking distance to Whitton mainline station with regular services to London Waterloo. The high street is conveniently located offering a vast array of shops, bars and restaurants. The property is also within walking distance of Hanworth Park.

Features

- Ground Floor
- Two Bedrooms
- Two Bathrooms
- Long Lease
- Unallocated Parking
- No Chain

Hanworth Road, Hounslow, TW4



Total area (approx.) : 50.5 sq. m (543 sq. ft)