



Warkworth Gardens, TW7

£400,000

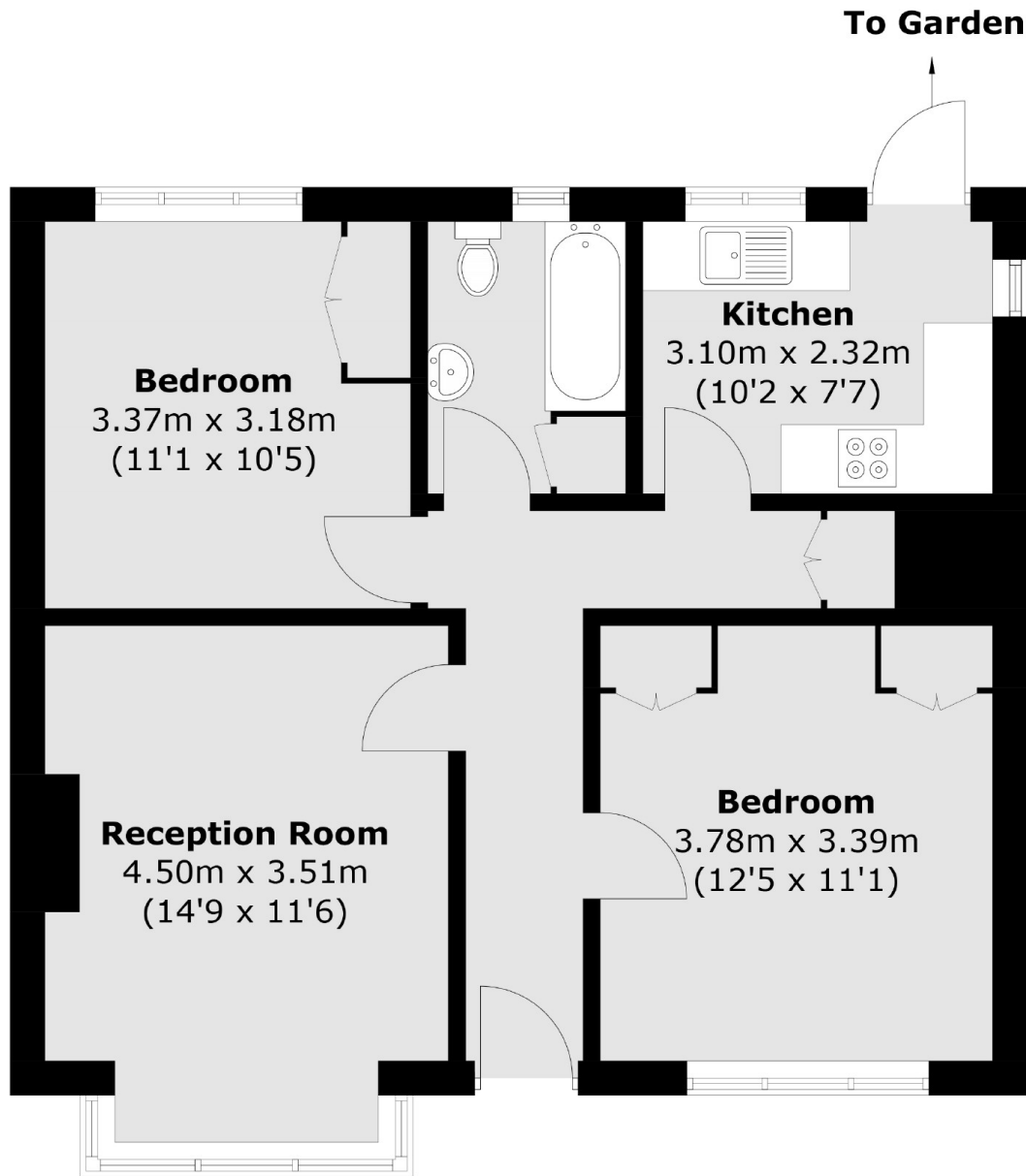
Offered to the market with no onward chain is this beautifully presented two double bedroom ground floor maisonette with a bright and spacious reception room, separate kitchen and neutral bathroom. We love the original hardwood parquet flooring throughout. The property further benefits from its own entrance, desirable corner plot position with large private front garden.

Warkworth Gardens is conveniently situated in the highly sought after Northumberland residential area, close to local amenities, parks and schools. The property is a short walk to Syon Lane train station which regular services to London Waterloo.

Features

- Private Entrance
- Two Double Bed - Ground Floor
- Corner Plot Position
- Private Front Garden
- No Onward Chain
- Close To Station

Warkworth Gardens, Isleworth, TW7



Total area (approx.): 62.1 sq. m (668.4 sq. ft)