



Teesdale Gardens, TW7

£950,000

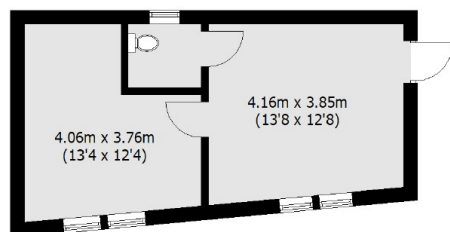
A beautiful and spacious five bedroom semi-detached property, comprising three reception rooms, four bathrooms and two dressing rooms. The property further benefits from off street parking for up to four cars, a large rear garden and annex to the rear.

Teesdale Gardens is moments away from excellent local schools, shops and parks. Isleworth BR Mainline and Syon Lane stations are nearby as well as easy reach to A4 and M4 motorway.

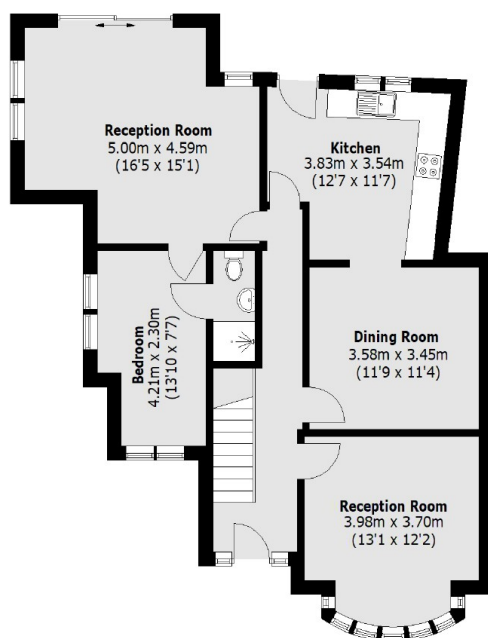
Features

- Semi-Detached House
- Five Bedrooms
- Four Bathrooms
- Off-Street Parking
- Garden with Annex
- Close To Transport

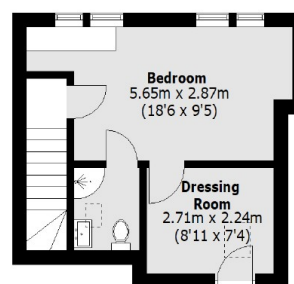
Teesdale Gardens, Isleworth, TW7



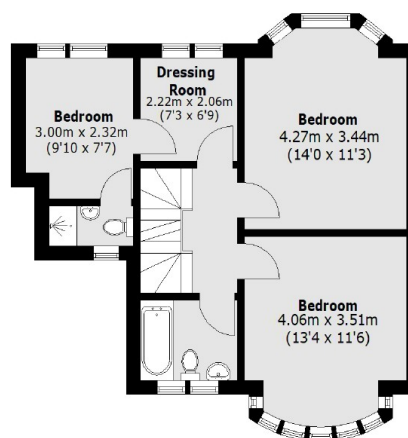
Outbuilding



Ground Floor



Second Floor



First Floor

Total area (approx.): 162.0 sq. m (1,743.7 sq. ft)
Outbuilding area (approx.): 31.0 sq. m (333.7 sq. ft)