



Ellerdine Road, TW3

£565,000

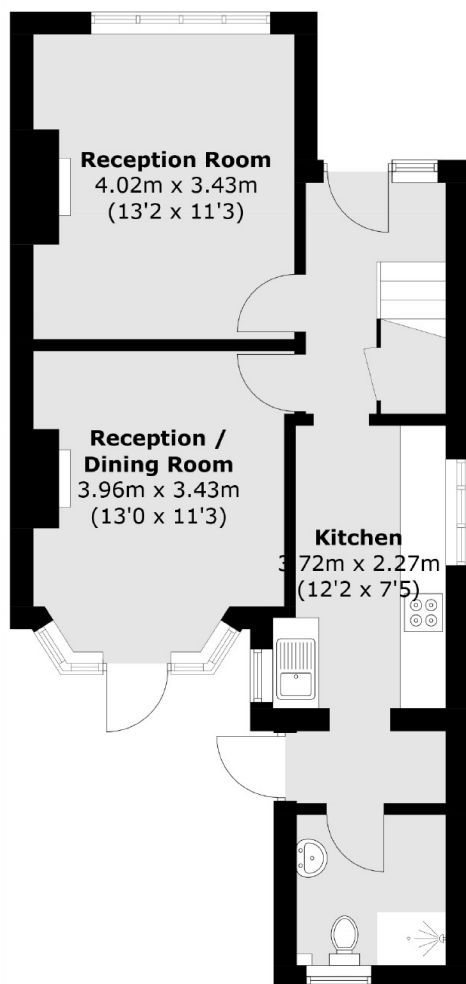
A superb three bedroom end-of-terrace house located on a popular road. Offering generous living space throughout, this house benefits from two bathrooms (one of which is a walk-in wet room), two reception rooms, separate kitchen and private rear garden. There is further scope to extend (STTP)

Ellerdine road is a sought after and popular quiet residential road, within close proximity to popular schools, local amenities and transport links including Hounslow tube station (Piccadilly line).

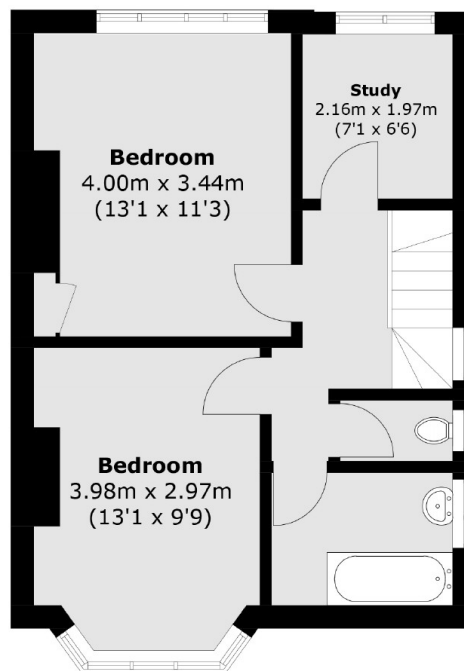
Features

- End of Terrace
- Three Bedrooms
- One Bathroom / One Wet Room
- Shared Driveway
- Private Garden
- Scope to Extend

Ellerdine Road, Hounslow, TW3



Ground Floor



First Floor

Total area (approx.): 90.7 sq. m (976.3 sq. ft)