



Stirling Grove, TW3

£315,000

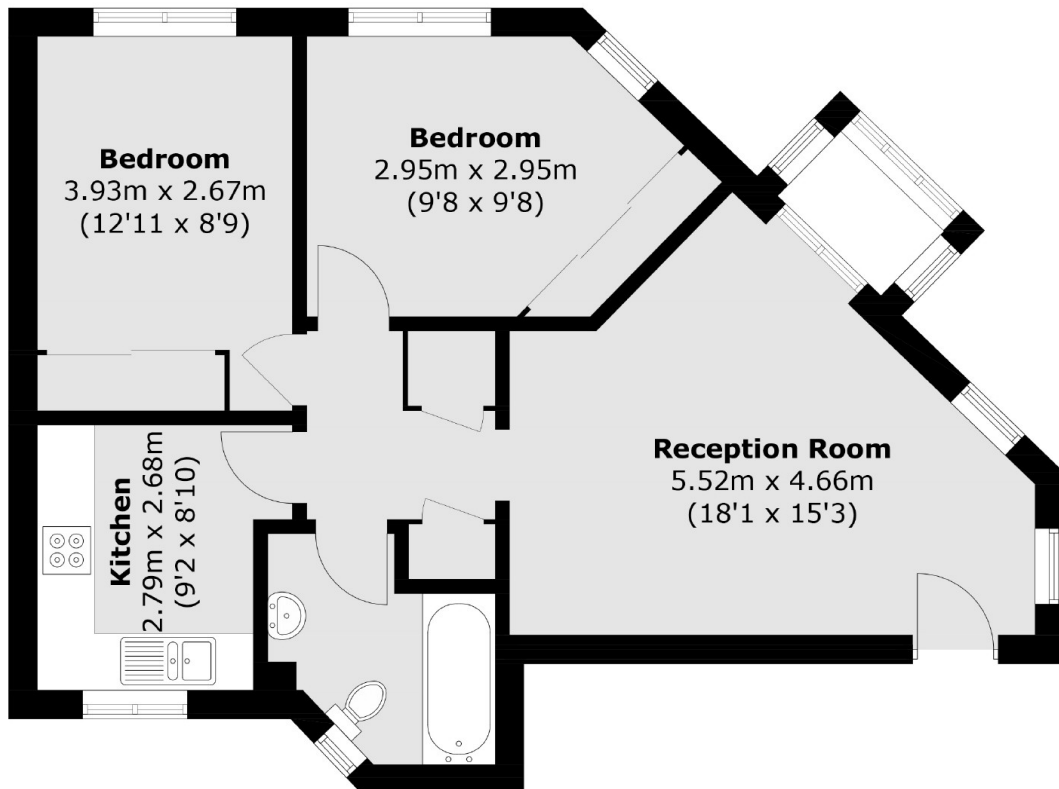
Offered to the market with no onward chain, we are delighted to bring to the market this spacious two double bedroom first floor apartment. This property offers generous room proportions, ample storage and allocated parking. An Ideal first time buy or investment purchase!

Stirling Grove is located in a quiet cul-de-sac in the heart of Hounslow and is situated moments from Hounslow East Underground station (Piccadilly line) and Hounslow High Street which offers a vast array of shops and restaurants.

Features

- First Floor Apartment
- Two Double Bedrooms
- Allocated Parking Bay
- Central Location
- Communal Gardens
- No Chain

Stirling Grove, Hounslow, TW3



Total area (approx.): 58.8 sq. m (632.9 sq. ft)