



## Worton Gardens, TW7

£780,000

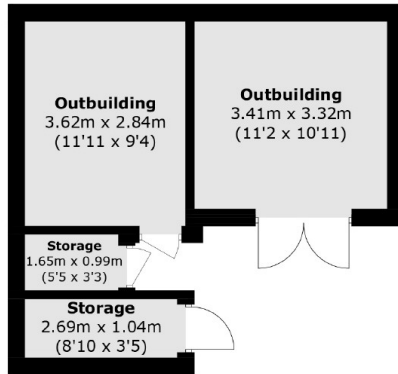
We are delighted to bring to the market this spectacular semi detached four bedroom family home offering almost 1,590 square feet of generous living space. Presented to a high standard throughout, this fantastic house offers spacious living over three floors, to include two bathrooms (one en-suite), downstairs WC, utility room, impressive double reception space and delightful rear kitchen/dining room. Further benefits include an impressive sunny south-east facing garden, large outbuilding with several storage rooms and driveway for multiple cars.

Worton Gardens is ideally situated on a quiet residential tree lined road and is a short walk to local amenities, parks and schools. Osterley (Piccadilly line), Isleworth (BR line) and Hounslow East (Piccadilly line) stations are all nearby offering excellent links to Central London and Heathrow Airport.

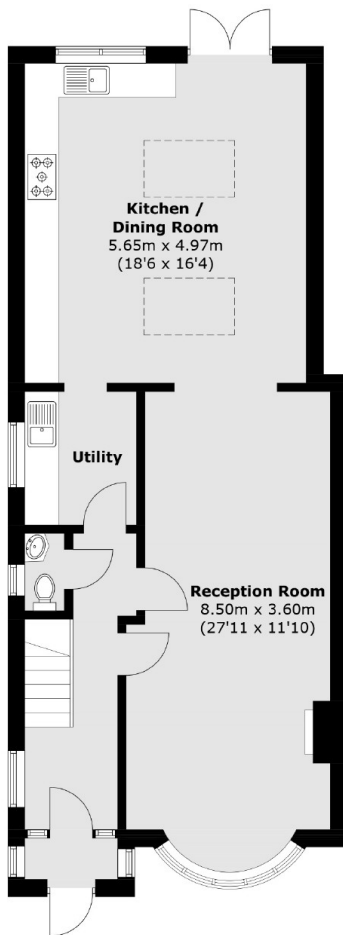
### Features

Semi Detached  
Four Bedrooms  
Two Bathrooms + W/C  
Large Garden with Outbuilding  
Off Street Parking  
Sought After Road

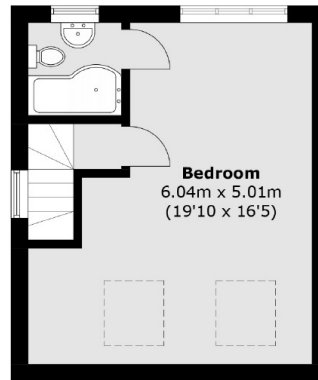
# Worton Gardens, Isleworth, TW7



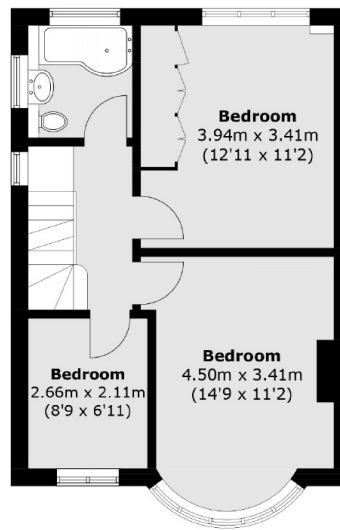
(Not Shown In Actual  
Location / Orientation)



**Ground Floor**



**Second Floor**



**First Floor**

Total area (approx.): 147.7 sq. m (1,589.8 sq. ft)  
Outbuilding: 27.6 sq. m (297.1 sq. ft)