



## London Road, TW7

### £285,000

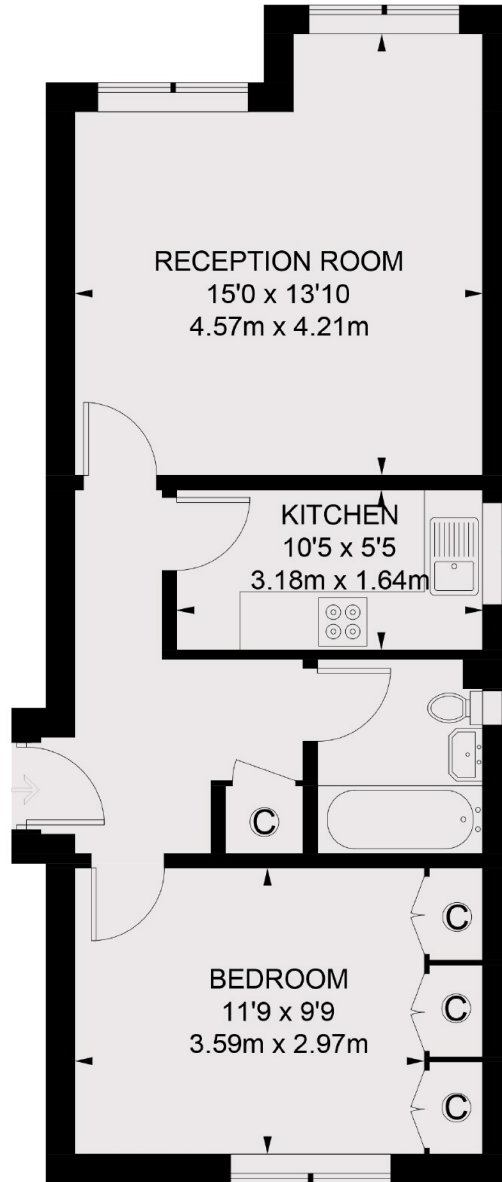
Offered to the market with no onward chain, is this beautifully presented and larger than average one double bedroom apartment. Located on the first floor of a popular development in Isleworth, further benefits include gated parking and communal gardens.

Milestone Court is well placed for easy access to Isleworth & Syon BR Mainline Stations, while the amenities of Isleworth, St Margaret's and Richmond are all within easy reach.

### Features

- One Double Bedroom
- Large Reception
- Communal Gardens
- Central Location
- Allocated & Gated Parking
- No Chain

# London Road, Isleworth, TW7



## FIRST FLOOR

TOTAL APPROX. FLOOR AREA 508 SQ. FT. (47.2 SQ. M.)

**Dexters**

Isleworth  
568 London Road  
Isleworth  
TW7 4EP

Sales  
020 8560 1177

Energy Rating: . We aim to make our particulars both accurate and reliable. However they are not guaranteed; nor do they form part of an offer or contract. If you require clarification on any points then please contact us, especially if you're traveling some distance to view. Please note that appliances and heating systems have not been tested and therefore no warranties can be given as to their good working order.

 **RICS** | Regulated  
Estate Agent  
and Letting Agent

[dexters.co.uk](http://dexters.co.uk)