



Summerwood Road, TW7

£325,000

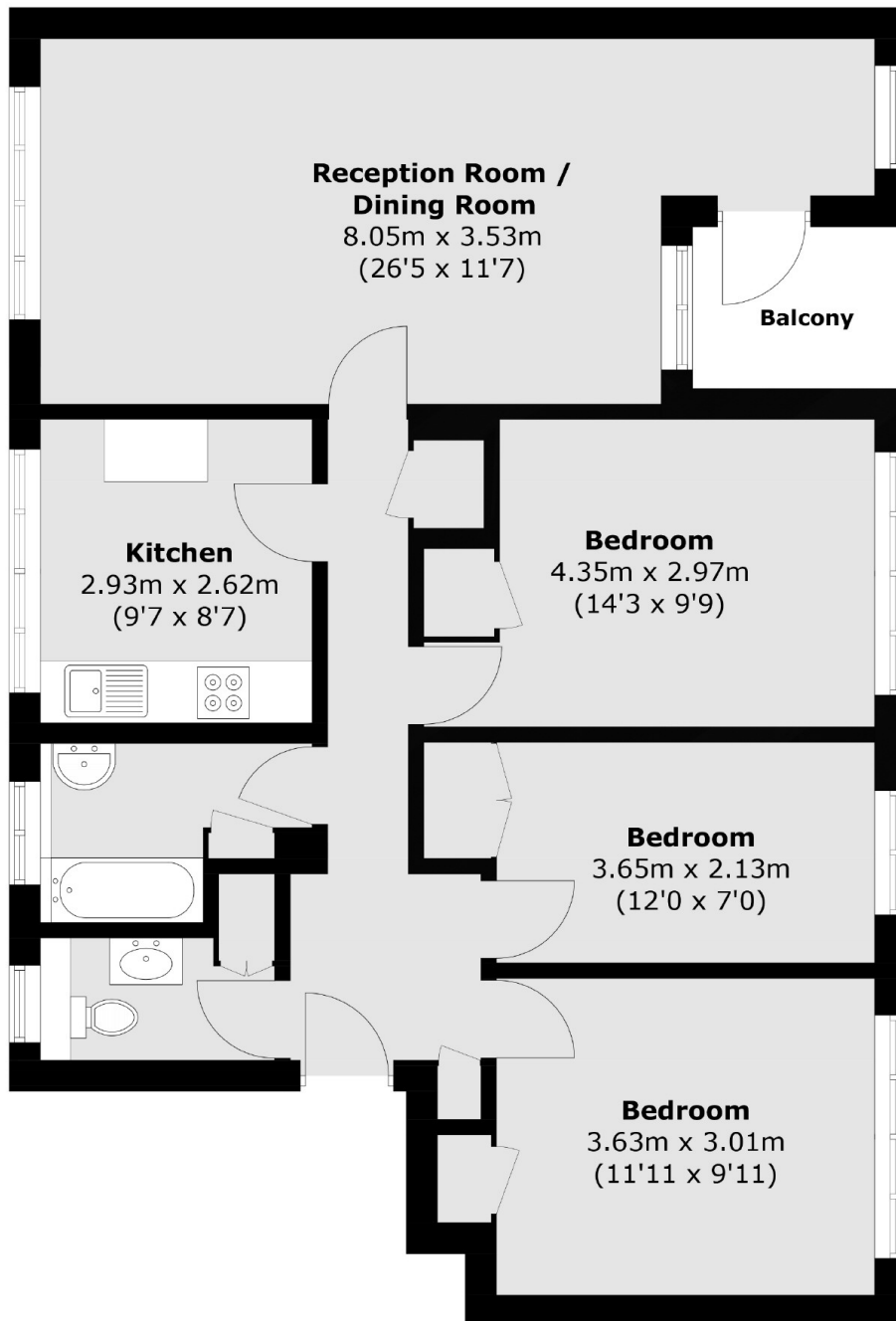
Perfect for first time buyers and investors alike this three double bedroom apartment on the ground floor of a popular development comes with the added benefit of a private outdoor space. Further benefits include no onward chain.

Summerwood Road is conveniently located on the borders of Twickenham and situated close to local amenities, transport links and parks.

Features

- Three Bedrooms
- Ground Floor Flat
- No Onward Chain
- Residential Parking
- Private Outdoor Space
- Close To Amenities

Summerwood Road, Isleworth, TW7



Total area (approx.): 84.4 sq. m (908.5 sq. ft)
Balcony : 3.2 sq. m (34.4 sq. ft)