



## Herbert Place, TW7

£675,000

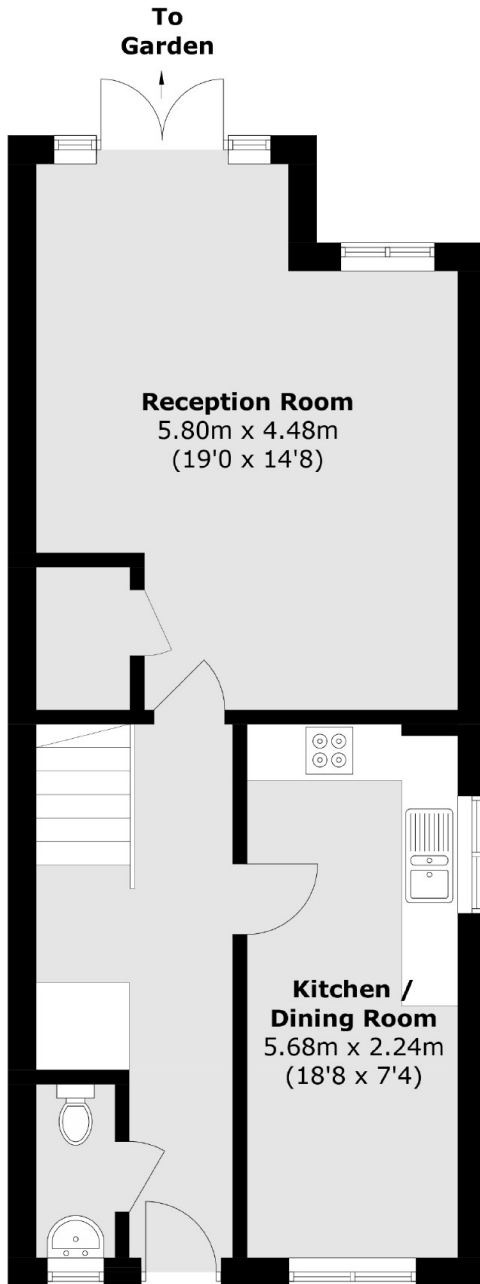
Offered to the market with no onward chain is this bright and spacious three bedroom, two bathroom house arranged over two floors, offering almost 1,050 sq.ft of generous living space. Immaculately presented throughout, this lovely house benefits from a principal bedroom with en suite, family bathroom, separate kitchen, spacious lounge, downstairs WC, large sunny garden and off-street parking.

Superbly situated in a residential development within walking distance to both Osterley (Piccadilly) and Isleworth (mainline) stations, as well as local amenities, parks and schools. There is easy access to the A4/M4 in and out of London.

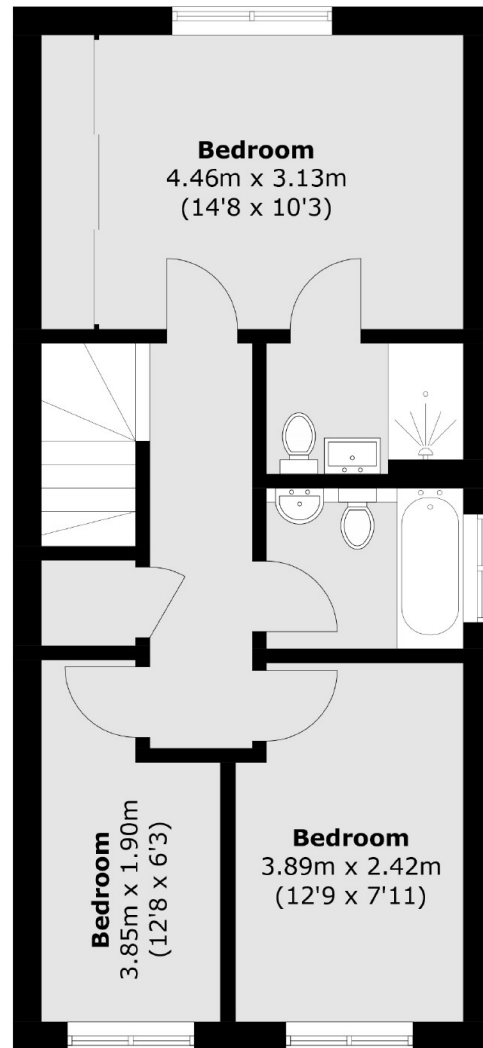
### Features

- Semi-Detached House
- Three Bedrooms
- Off-Street Parking
- Large Garden
- Private Development
- No Onward Chain

# Herbert Place, Isleworth, TW7



**Ground Floor**



**First Floor**

Total area (approx.): 97.4 sq. m (1,048.4 sq. ft)