



Samuelson Place, TW7

£315,000

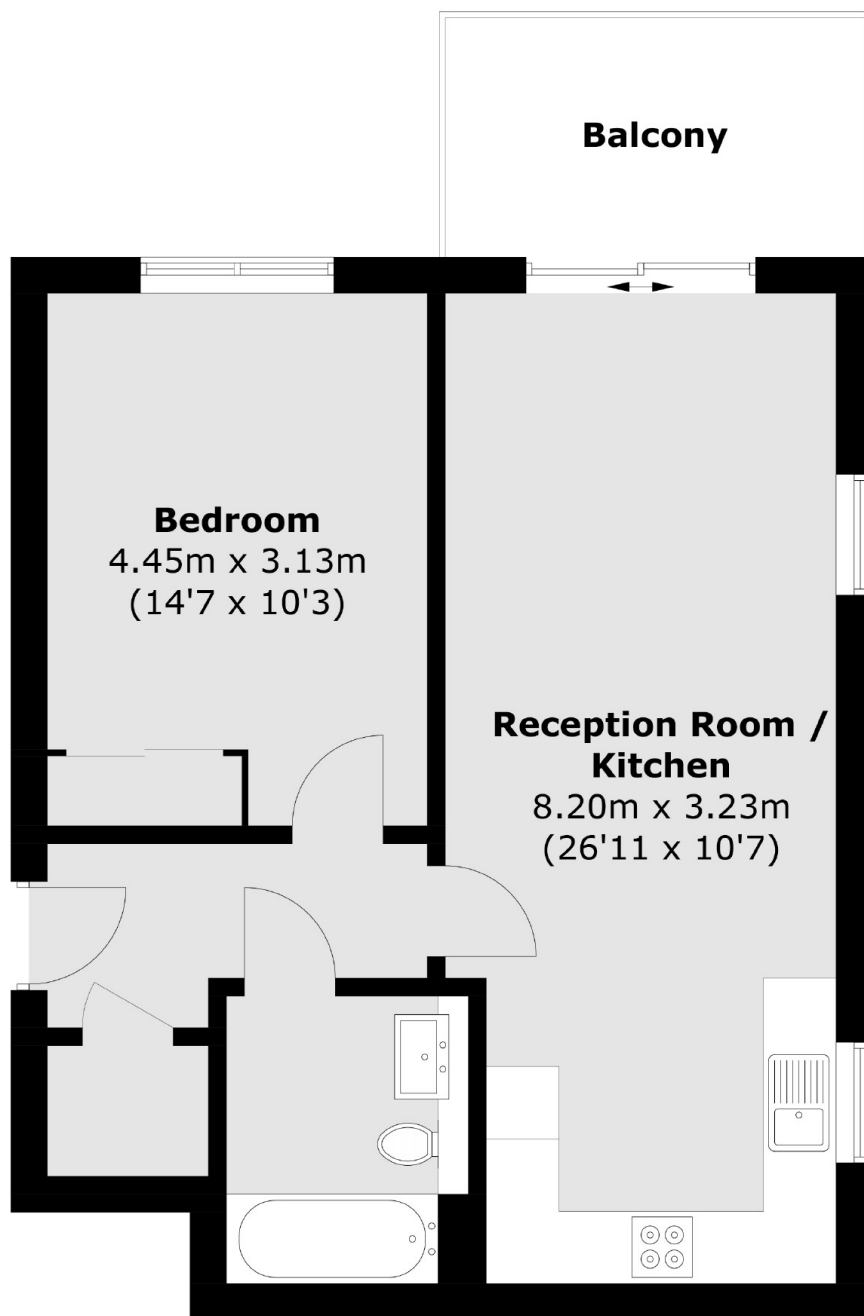
We are delighted to bring to the market this beautifully presented, one double bedroom, first floor apartment, comprising of a family bathroom, generous living/dining space and a fully integrated kitchen with appliances. Further benefits include a large private balcony and long lease.

Located in a modern development within a short walk of Thornbury Park and Isleworth Train Station. London Road offers a large selection of shops, restaurants and local amenities with easy access to the A4/M4 providing excellent routes into and out of the city centre.

Features

- First Floor Apartment
- One Double Bedroom
- Long Lease
- Excellent Condition
- Private Balcony
- Sought After Development

Samuelson Place, Isleworth, TW7



Total area (approx.): 52.3 sq. m (562.9 sq. ft)
Balcony: 6.8 sq. m (73.1 sq. ft)

Dexters

Isleworth
568 London Road
Isleworth
TW7 4EP
Sales
020 8560 1177

Energy Rating: B. We aim to make our particulars both accurate and reliable. However they are not guaranteed; nor do they form part of an offer or contract. If you require clarification on any points then please contact us, especially if you're traveling some distance to view. Please note that appliances and heating systems have not been tested and therefore no warranties can be given as to their good working order.

 **RICS** | Regulated
Estate Agent
and Letting Agent

dexters.co.uk