



County Gardens, TW7

£775,000

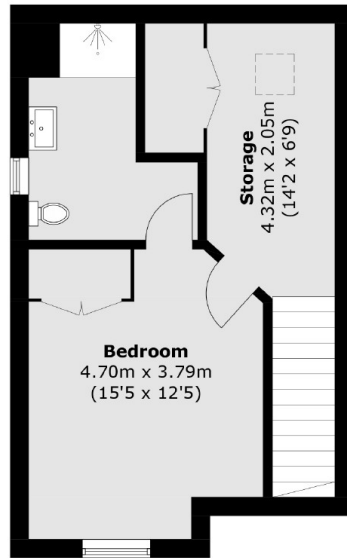
Offered to the market with no onward chain, we are delighted to bring to the market this superbly spacious and beautifully presented three double bedroom family home arranged over three floors. Offering more than 1,390 square feet of generous living space, this exceptional house has a large reception room leading onto the garden, separate kitchen, two bathrooms (one en-suite) and downstairs WC/Cloakroom. Further benefits include front and rear gardens and off street parking for multiple cars.

County Gardens is an exclusive development ideally located in between Isleworth and Whitton on a sought after road. There are a number of excellent local schools, amenities and transport links nearby.

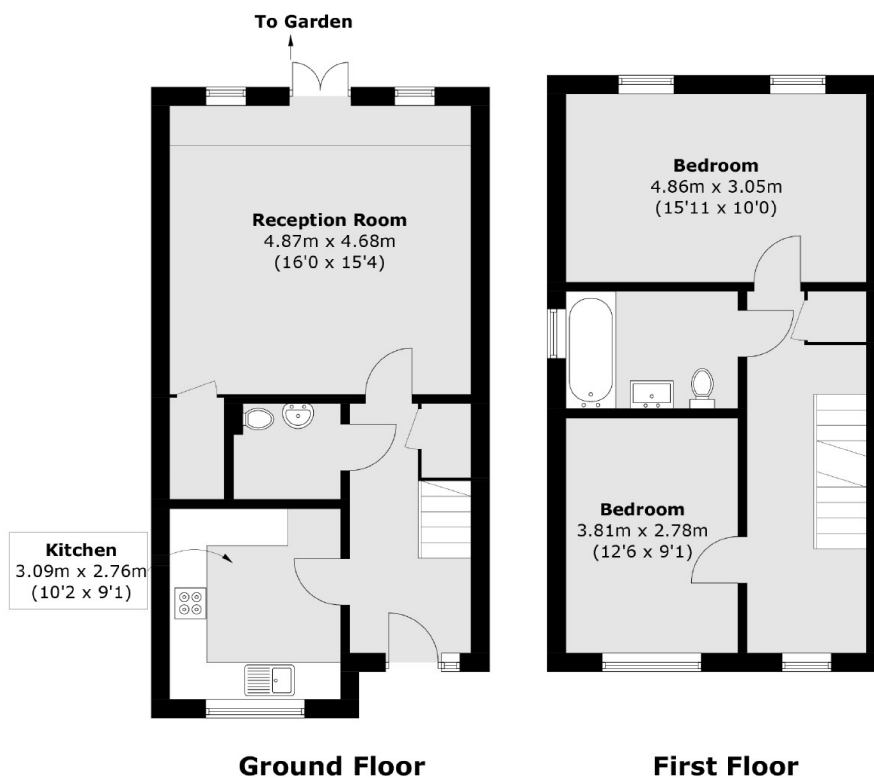
Features

- Freehold House
- Three Double Bedrooms
- Two Bathrooms
- Generous Front & Rear Garden
- Off-Street Parking
- No Onward Chain

County Gardens, Isleworth, TW7



Second Floor



Ground Floor

First Floor

Total area (approx.): 129.3 sq. m (1,391.8 sq. ft)