



## Selbourne Avenue, TW3

£305,000

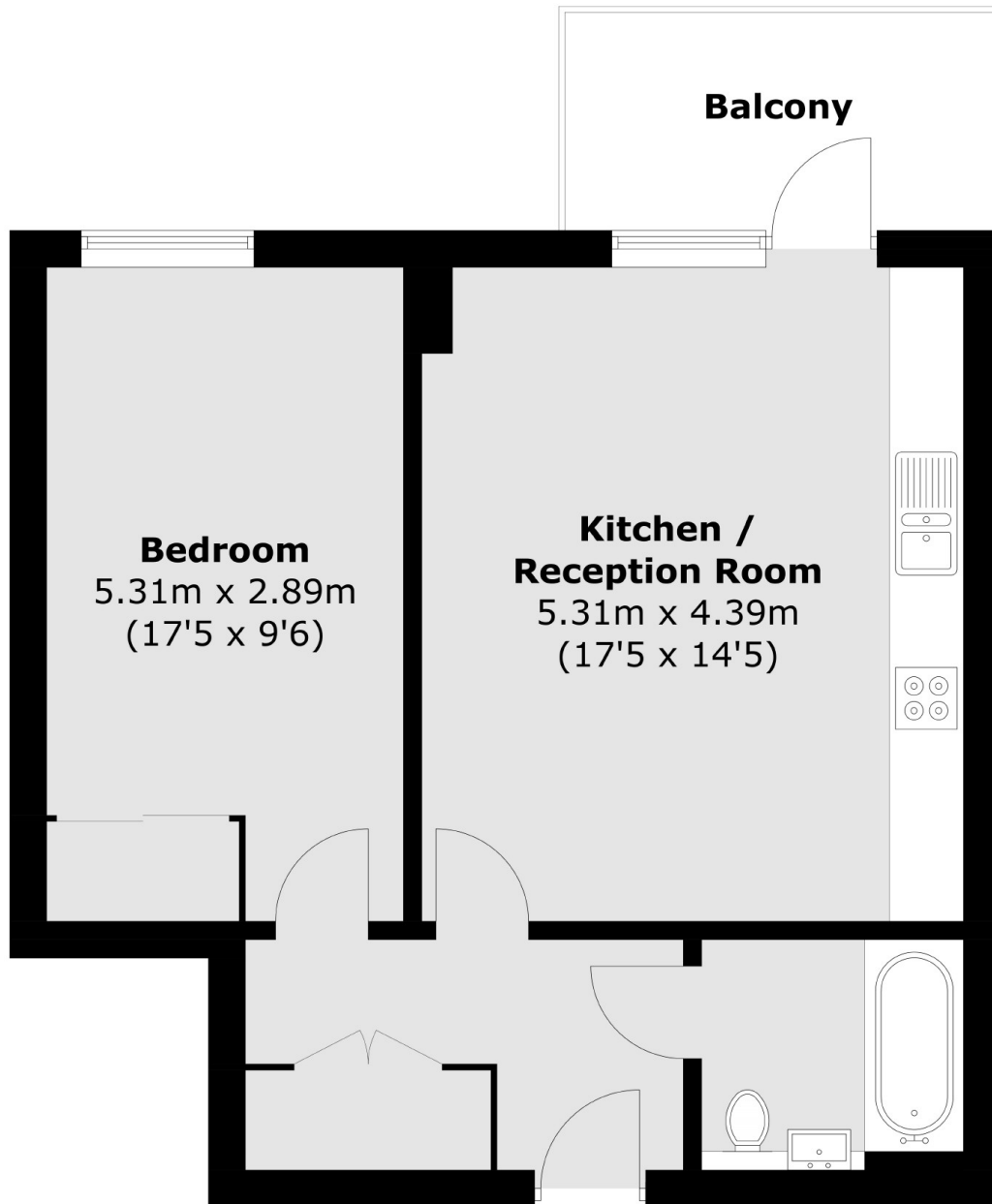
We are delighted to bring to the market this larger than average third floor apartment in a sought after development. Offering more than 550 square feet of generous living space, this light, bright and spacious one double bedroom apartment benefits from high quality finishes, integrated appliance and a large private balcony. Street parking is available locally.

Selbourne Avenue is conveniently located with the Hounslow high street a short walk away offering a vast array of shops, bars and restaurants. Hounslow East tube station is close by with easy access to Heathrow Airport and Central London.

### Features

- Third Floor Apartment
- One Double Bedroom
- Long Lease
- Private Balcony
- On Street Parking
- Close To Transport

Selbourne Avenue,  
Hounslow, TW3



Total area (approx.): 51.5 sq. m (554.3 sq. ft)  
Balcony: 6.1 sq. m (65.7 sq. ft)

**Dexters**

Isleworth  
568 London Road  
Isleworth  
TW7 4EP  
Sales  
020 8560 1177

Energy Rating: B. We aim to make our particulars both accurate and reliable. However they are not guaranteed; nor do they form part of an offer or contract. If you require clarification on any points then please contact us, especially if you're traveling some distance to view. Please note that appliances and heating systems have not been tested and therefore no warranties can be given as to their good working order.

 **RICS** | Regulated  
Estate Agent  
and Letting Agent

dexters.co.uk