



## Pulteney Close, TW7

£475,000

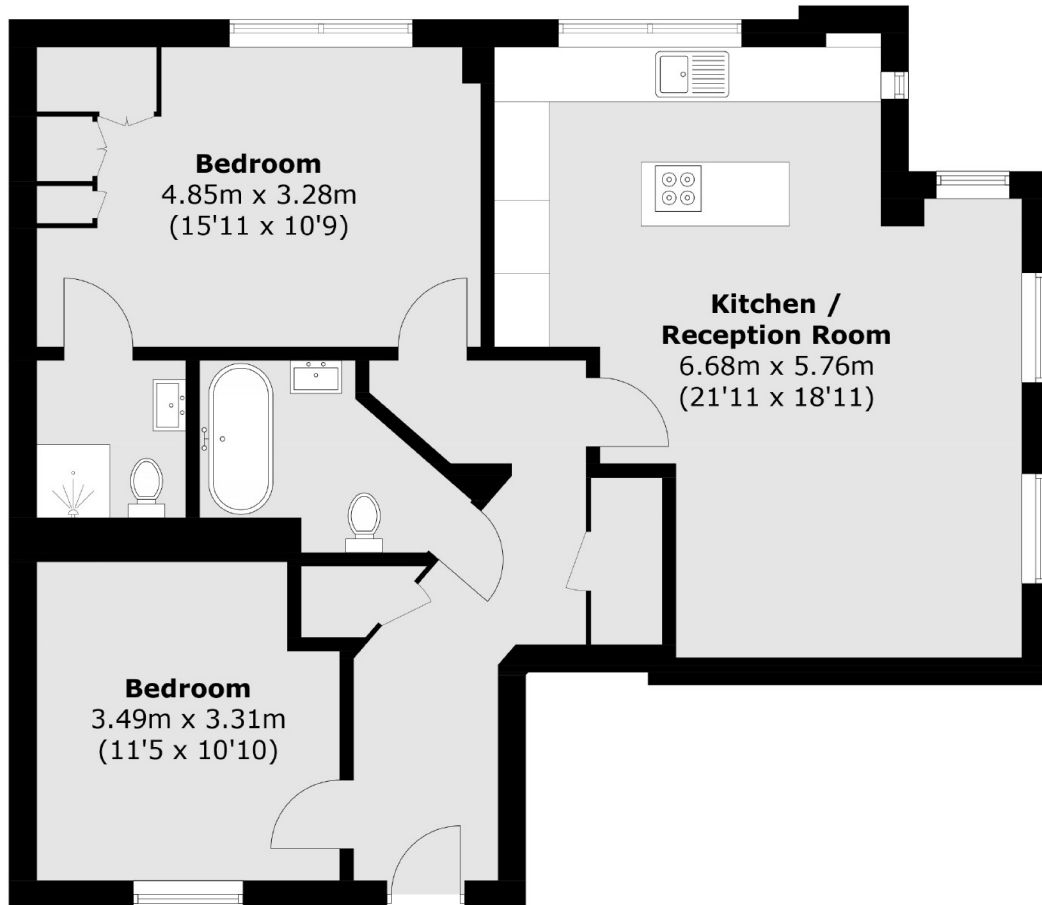
\*\*\*Offers in excess of\*\*\* We are delighted to bring to the market this stunning two bedroom, two bathroom ground floor apartment. The current owner has left no expense spared and has completely renovated the property throughout, with a new kitchen and bathrooms installed to an exceptional high quality finish. The apartment further delights with impressively high ceilings throughout. Further benefits include allocated parking and a long lease of approximately 978 years remaining.

### Features

- Gated Development
- Two Double Bedrooms
- Two Bathrooms
- One Allocated Parking
- Renovated Throughout
- Long Lease - 978 Years

This exclusive development is conveniently situated close to local transport, amenities and local parks. Isleworth station is a short walk away offering regular services to London Waterloo.

# Pulteney Close, Isleworth, TW7



Total area (approx.): 81.6 sq. m (878.3 sq. ft)