



Staines Road, TW4

£299,950

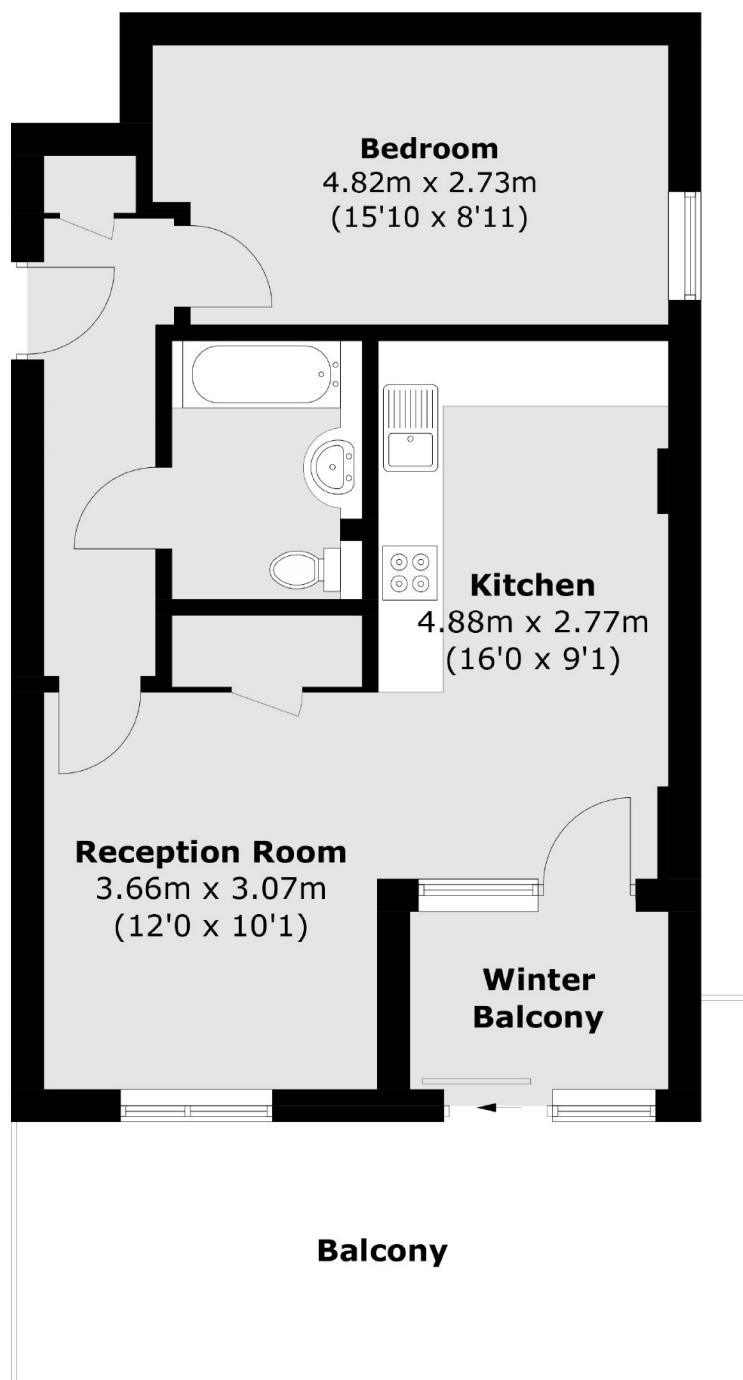
A superb and immaculately presented one double bedroom penthouse apartment offering stunning views of Hounslow Heath and Central London Skyline. Further benefits include a delightful indoor winter garden, large south-east facing balcony, secure allocated parking and long lease.

Bishopsgate House is conveniently located on Staines Road with easy access to Hounslow Underground Station and Hounslow Overground Station, both providing direct routes to central London and Heathrow Airport. There is a vast array of shops, bars and restaurants close by, in addition to the local outstanding schools, amenities and parks. There is also access to the A4/M4 providing links to Heathrow Airport and Central London.

Features

- Penthouse Apartment
- Stunning Central London Views
- Winter Garden & Large Balcony
- Immaculate Condition
- Long Lease
- Allocated Parking

Staines Road, Hounslow, TW4



Total area (approx.): 54.6 sq. m (587.7 sq. ft)
Balcony(approx.): 16.8 sq. m (180.8 sq. ft)