



## Meadow Way, TW5

£725,000

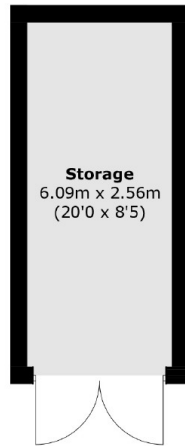
A charming four bedroom semi detached family home on a highly sought-after residential road . Benefits include two reception rooms, two bathrooms, a large rear private garden and off street parking.

Meadow Way is positioned close to local amenities, transport links, excellent schools and local green spaces. The property has easy access to the A4/M4 with convenient links in and out of London.

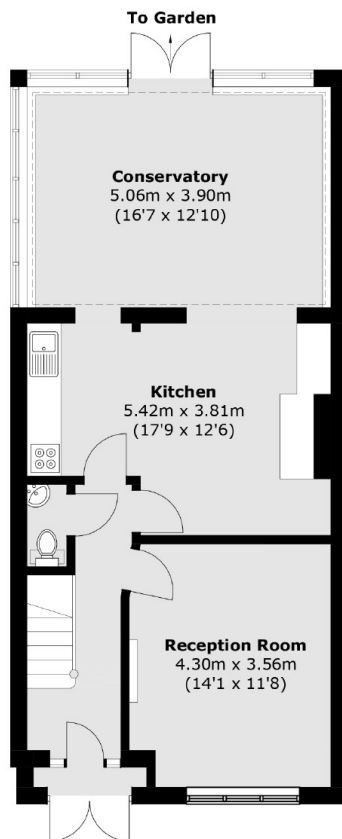
### Features

Semi Detached  
Four Bedrooms  
Two Bathrooms  
Off Street Parking  
Large Rear Garden

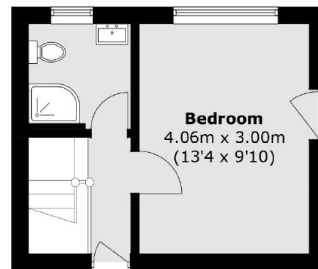
# Meadow Way, Hounslow, TW5



(Not Shown In Actual  
Location / Orientation)

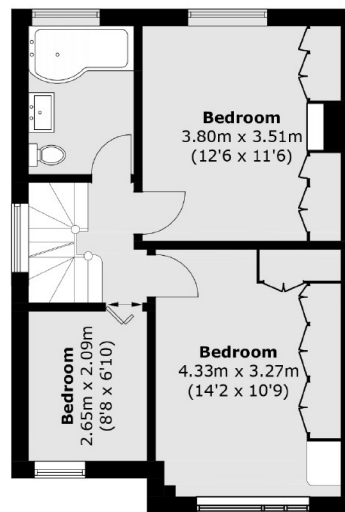


**Ground Floor**



Eaves No  
Access

**Second Floor**



**First Floor**

Total area (approx.): 131.3 sq. m (1,413.2 sq. ft)  
Storage (approx.): 15.9 sq. m (171.1 sq. ft)