



## Elmer Gardens, TW7

£575,000

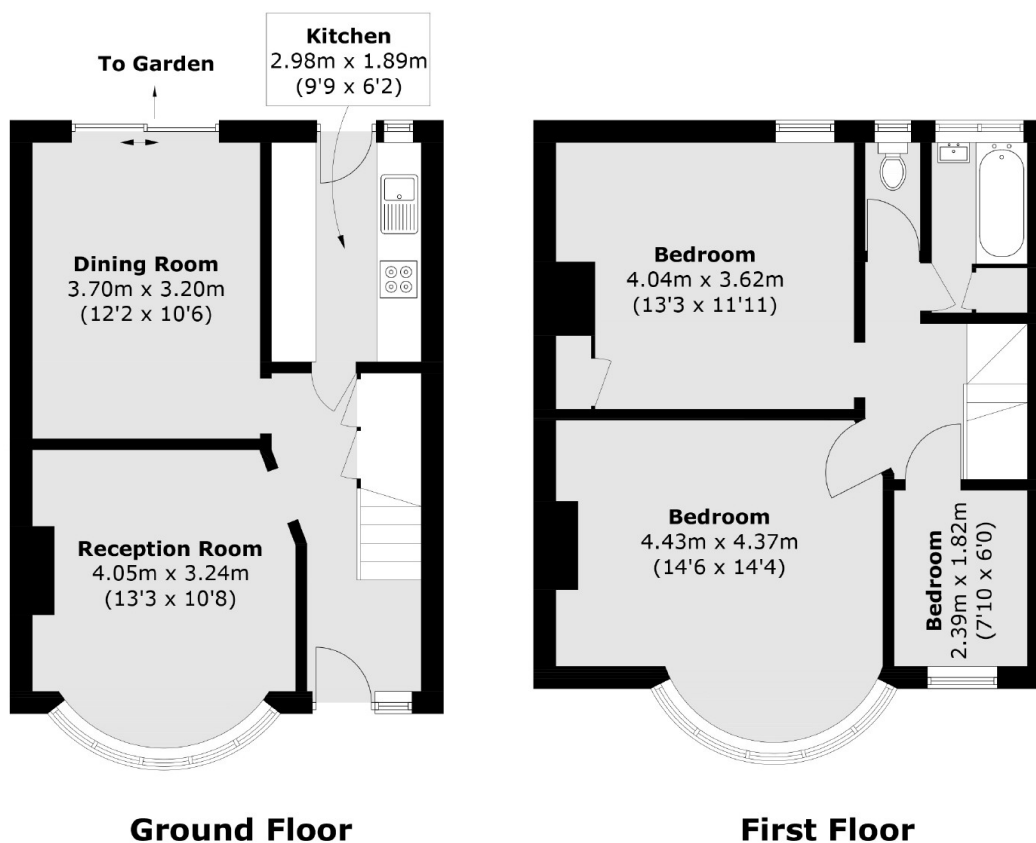
Offered to the market with no onward chain, we are delighted to bring to the market this unique opportunity to acquire this three bedroom freehold house with exceptionally large garden. This house offers significant scope to extend (with planning approval granted), update and modernise, creating the perfect family home or development opportunity

Elmer Gardens is a popular residential road located within walking distance from Isleworth mainline station. Hounslow town centre is conveniently located with a vast array of shops, bars and restaurants. Richmond and Twickenham are also within easy access, as are road links into and out of central London.

### Features

- Linked-Terrace House
- Scope to Extend and Modernise
- Three Bedrooms
- Exceptionally Large Garden
- Popular Road
- No Chain

# Elmer Gardens, Isleworth, TW7



Total area (approx.): 88.9 sq. m (956.9 sq. ft)