



Castle Road, TW7

£329,000

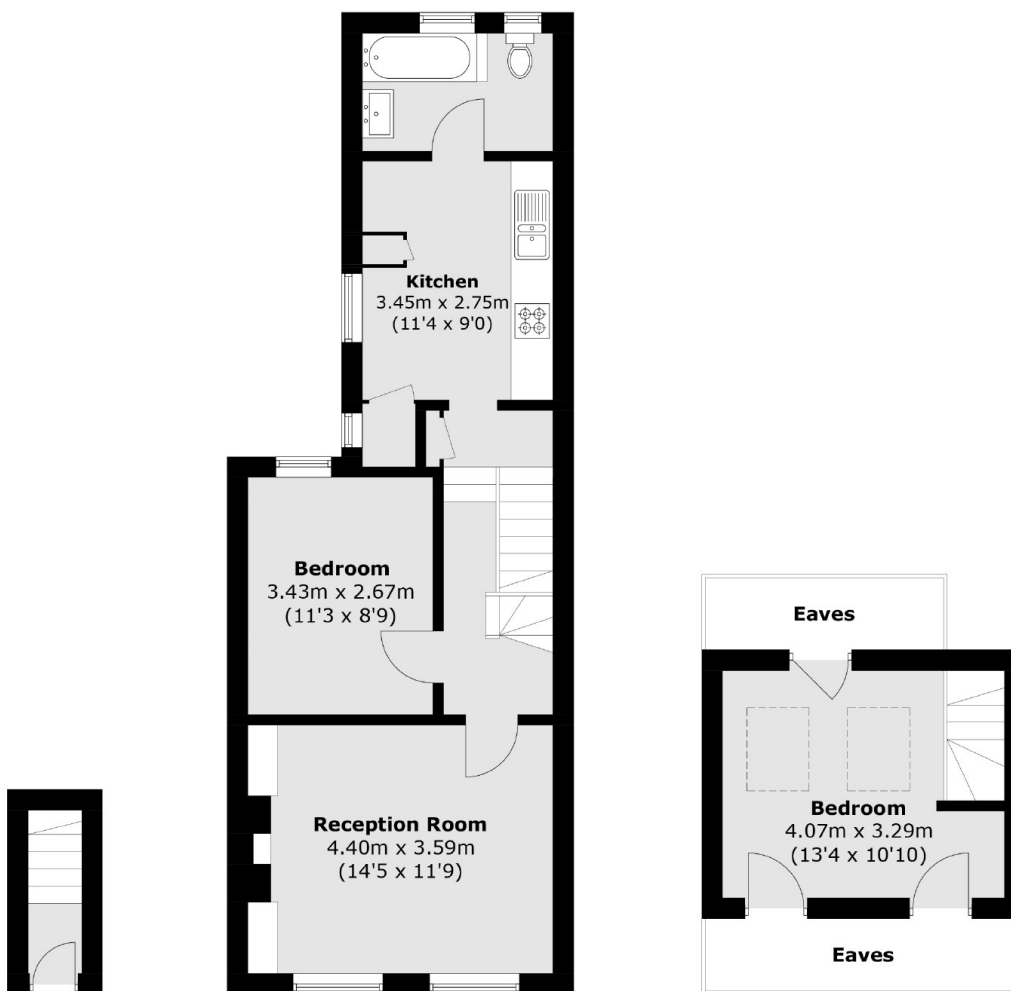
Offered to the market with no onward chain, we are delighted to bring to the market this split level period property conversion on a popular road in Isleworth. Spanning almost 700 square feet of generous living space, this delightful property comprises of two double bedrooms, reception room and separate kitchen. Further benefits include a long lease, low running costs and front garden. A fantastic purchase for first time buyers or investors looking for a great rental income

Situated close to excellent local schools, parks and shops as well as a short walk to Isleworth train station which offers regular services to London Waterloo. Neighbouring areas of St Margarets, Twickenham and Richmond are also within easy reach.

Features

- Split Level Period Conversion
- Two Double Bedrooms
- Separate Kitchen
- Front Garden
- Sought After Location
- Long Lease
- No Chain

Castle Road, Isleworth, TW7



Ground Floor

First Floor

Second Floor

Total area (approx.): 64.9 sq. m (698.5 sq. ft)
(Excluding Eaves)