



## Palmerston Road, TW3

### £649,950

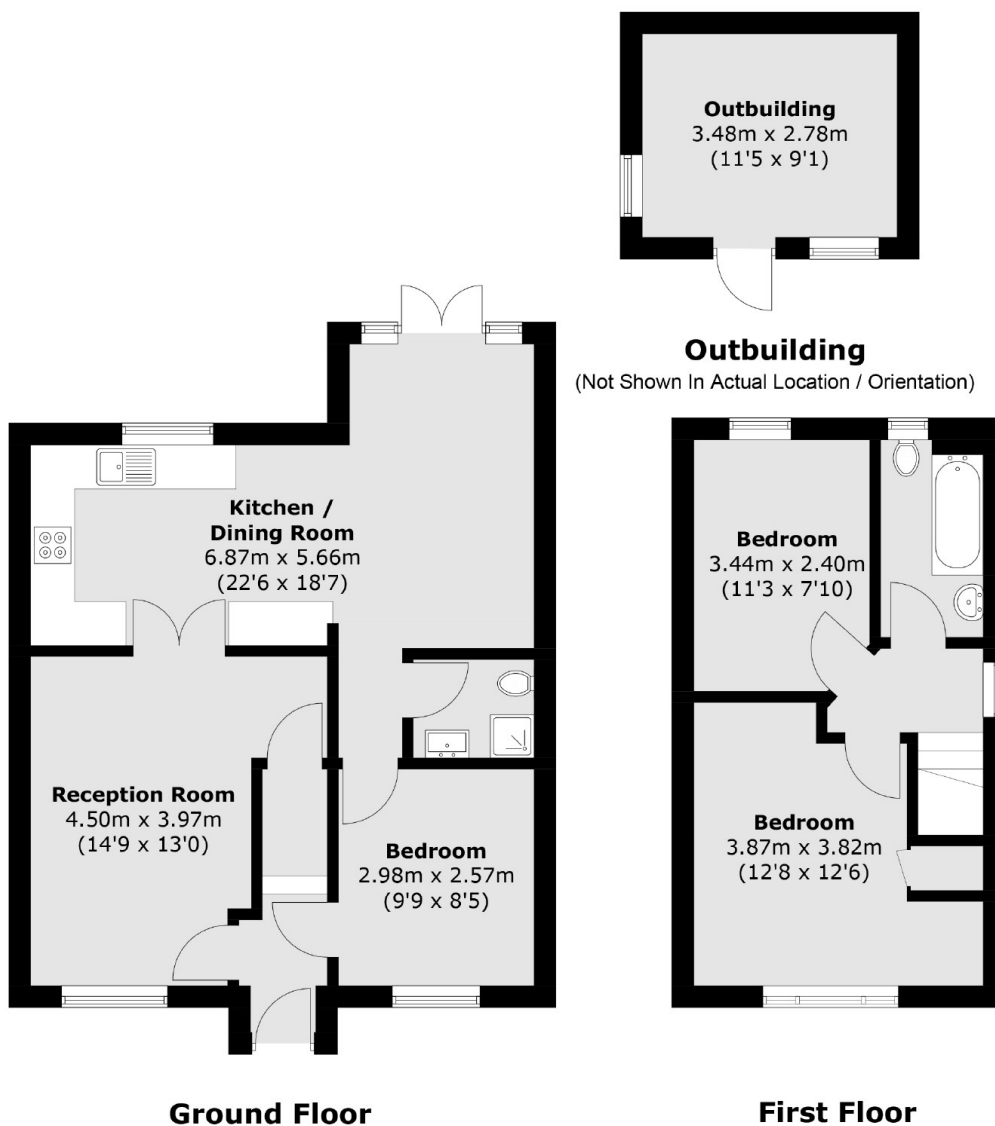
Offered to the market with no onward chain is this beautiful and spacious three bedroom, two bathroom semi detached house situated in a quiet residential development in Osterley. Benefits include a large modern kitchen with appliances, front and rear gardens, outbuilding and driveway for multiple cars.

The property is located a short walk to Osterley tube station (Piccadilly line) with excellent links to Heathrow Airport and Central London. Local shops, schools and parks are all nearby making it a convenient location. Neighbouring areas of Richmond, Twickenham and Chiswick are also within easy reach.

### Features

- Semi-Detached House
- Two Bedrooms
- Two Bathrooms
- Driveway
- Outbuilding
- No Chain

# Palmerston Road, Hounslow, TW3



Total area (approx.): 84.6 sq. m (910.6 sq. ft)  
Outbuilding (approx.): 9.8 sq. m (105.5 sq. ft)