



Inverness Road, TW3

£349,950

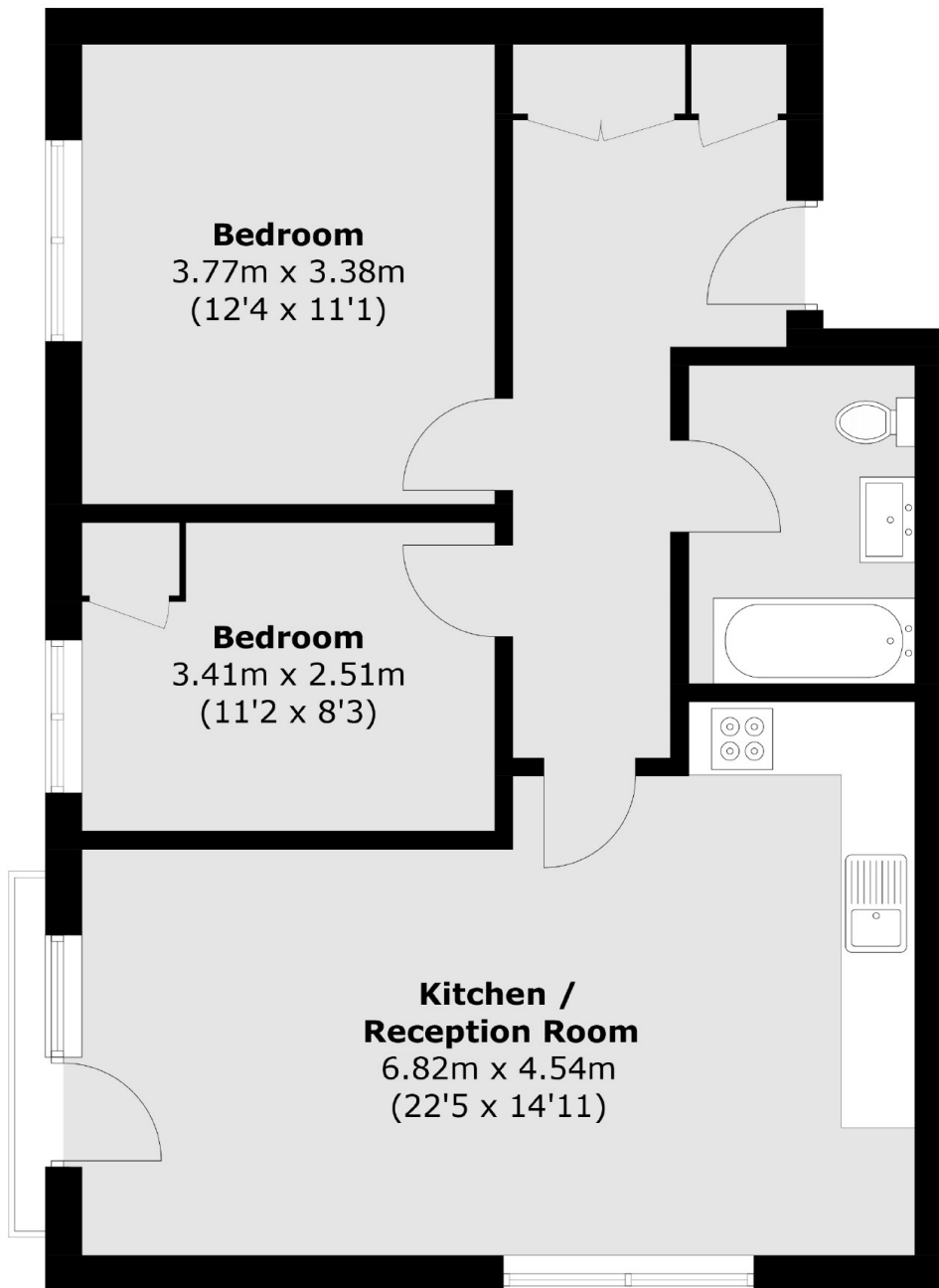
An immaculately presented, light, bright and spacious two double bedroom penthouse apartment. Offering more than 640 square feet of generous living space, this stunning apartment offers spacious room sizes, impressive kitchen/reception room, great for entertaining. Further benefits include a long lease and allocated parking.

Dewhurst Court is located in a quiet and popular development which is situated close to good schools, Hounslow Central Tube Station (Piccadilly Line) and Hounslow Train Station (National Rail).

Features

- Top Floor / Penthouse
- Two Double Bedrooms
- Immaculate Condition
- Lift Service
- Communal Gardens
- Allocated Parking

Inverness Road, Hounslow, TW3



Total area (approx.): 65.2 sq. m (701.8 sq. ft)