



## London Road, TW7

£2,100 Per calendar month

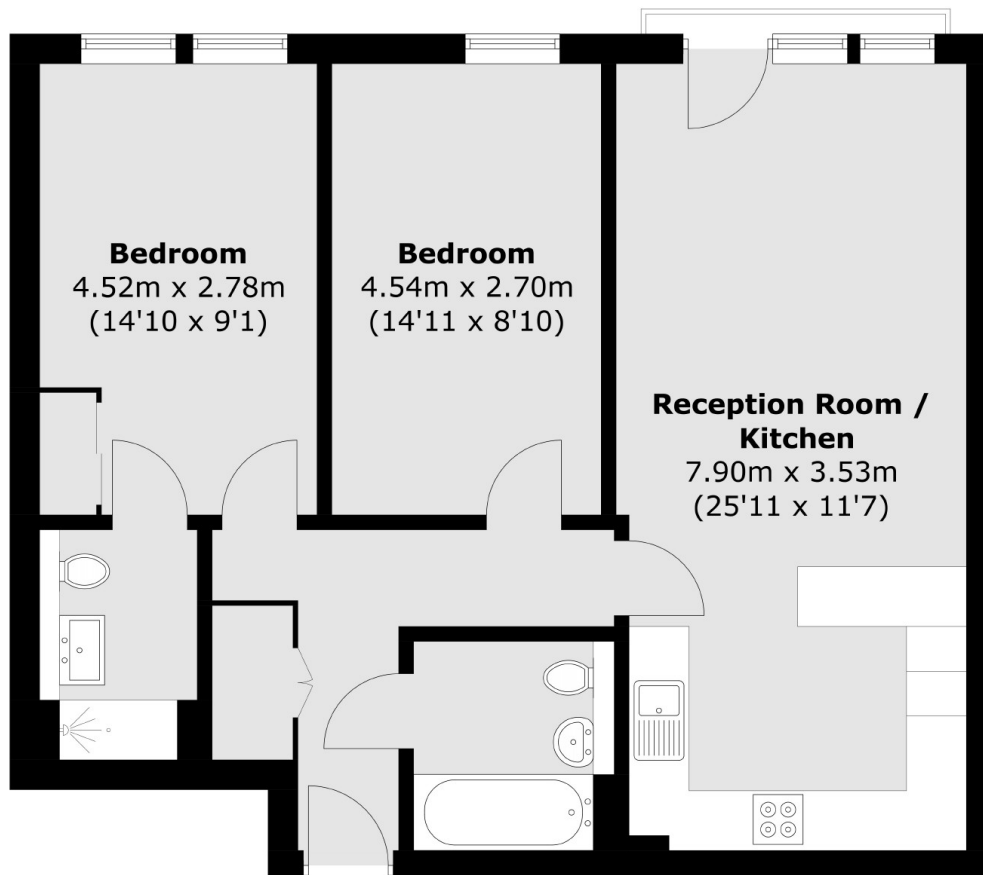
A beautifully presented two bedroom apartment with an open and airy living area and an allocated parking space. Features include natural light, an en-suite bathroom and being within a gated development.

The property is superbly situated in a popular development close to local amenities, Isleworth station and local parks.

### Features

- Gated Development
- Two Double Bedrooms
- Two Modern Bathrooms
- Ample Storage
- Bright Living Space
- Allocated Parking

London Road,  
Isleworth, TW7



Total area (approx.): 71.3 sq. m (767.5 sq. ft)

**Dexters**

Isleworth  
568 London Road  
Isleworth  
TW7 4EP  
Lettings  
020 8560 1717

Energy Rating: . We aim to make our particulars both accurate and reliable. However they are not guaranteed; nor do they form part of an offer or contract. If you require clarification on any points then please contact us, especially if you're traveling some distance to view. Please note that appliances and heating systems have not been tested and therefore no warranties can be given as to their good working order.

 **RICS** | Regulated  
Estate Agent  
and Letting Agent

[dexters.co.uk](http://dexters.co.uk)