



Mogden Lane, TW7

£499,950

A well-presented three bedroom family home offered to the market with no onward chain. The property benefits from a spacious through lounge, large private rear garden and plenty of opportunity to extend (STPP).

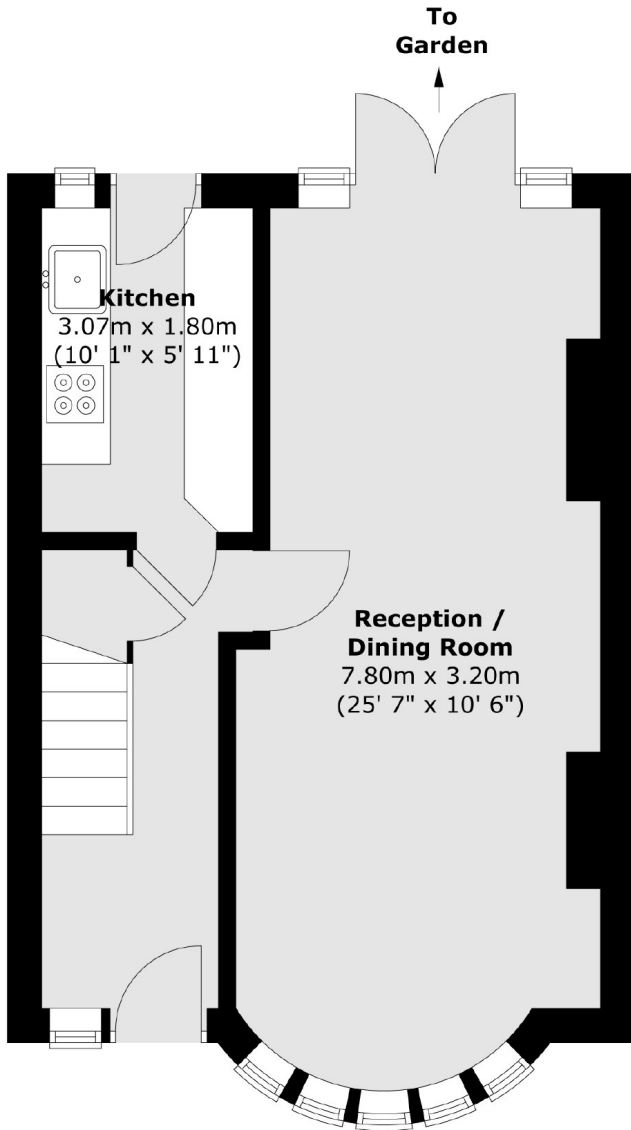
Superbly situated in a convenient location close to the amenities of Isleworth, Twickenham and St. Margarets. The property is also located nearby to excellent transport links, shops and schools.

Features

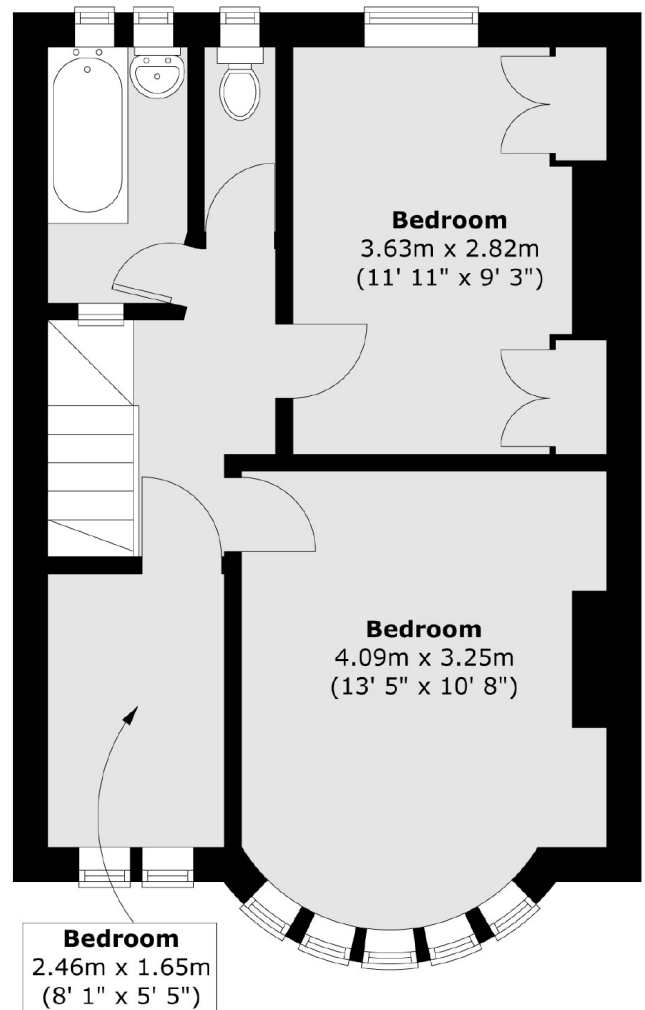
- Three Bedrooms
- Mid Terrace
- Large Rear Garden
- No Onward Chain
- Potential To Extend (STPP)
- Close To Local Amenities

Mogden Lane, Isleworth, TW7

Ground Floor



First Floor



Total area (approx.) : 74.4 sq. m (801 sq. ft)